

WHERE FARMING STARTS

Product Guide 2026



FLAMAN

GRAIN STORAGE & HANDLING SOLUTIONS

AGI GALVANIZED BINS	04
MERIDIAN GALVANIZED BINS	06
MERIDIAN SMOOTHWALL BINS	08
WESTEEL SMOOTHWALL BINS	09
AERATION SOLUTIONS	10
GRAIN MONITORING	12
BIN ACCESSORIES	12
AUGER ACCESSORIES	13
GRAIN HANDLING SYSTEMS	14
AGI NECO GRAIN DRYERS	16
WALINGA ULTRA-VEYOR	17
BUCKET ELEVATORS	18
CHAIN CONVEYORS	18
STATIONARY AUGERS	19
TRANSFER AUGERS & CONVEYORS	19

AGI TRUCK AUGERS	20
AGI SWING AUGERS	22
MERIDIAN SWING AUGERS	23
MERIDIAN TRUCK AUGERS	24
MERIDIAN CONVEYORS	25
CONVEY-ALL CONVEYORS	26
AGI BATCO CONVEYORS	28

GRAIN CLEANING & ANALYSIS

BENCH GRAIN CLEANERS	30
LMC VISTASORT	31
KWIK KLEEN GRAIN CLEANERS	31
GCS GRAIN CLEANERS	31
CUSTOM SCREENS	32
GRAIN ANALYSIS	33

FARM IMPLEMENTS

GRAIN VACS	34
GRAIN BAGGERS	35
GRAIN EXTRACTORS	36
GRAIN BAG ROLLER	36
GRAIN BAGS	37
J&M GRAIN CARTS	38
FIRE SUPPRESSION	41
CONVEY-ALL SEED TENDERS	44
HAUL ALL AG TRAILERS	46
BRUNS GRAIN WAGONS	47
KELLO-BILT DISCS	48
WISHEK HEAVY DISCS	49
KINZE MACH TILL	50
BRILLION RIPPERS	51
SCHULTE DISC HARROW	52
SCHULTE 7-BAR HARROW	53
RITWAY LAND ROLLERS	54

Frank Flaman Foundation

The Frank Flaman Foundation supports charities and projects both locally and internationally. Flaman team members take part in development projects worldwide and are also active participants in their communities.

Most recently, some of our team members helped with construction at the Santiago Community Centre in Guatemala.



flaman.com/foundation

People **together**, doing what's right, making a difference.

Flaman is a family-focused company that strives to make a difference in our communities and beyond.

Here are a few ways our team contributed to our local communities this year:



Lethbridge Community Trailer Donation

Flaman Lethbridge had the privilege of working with YQL Neighbourhoods to bring their Neighbourhood Party Trailer to life.

At the heart of this project is a locally made Royal Cargo trailer, proudly built in Lethbridge by Southland.

We are happy to be part of this community-driven initiative to bring people together and support local events in a fun, accessible way and are excited to see the trailer hit the streets of Lethbridge!

RITEWAY HARROWS	55	FUEL LOCK	70	ENCLOSED TRAILERS	86
DEGELMAN BIOSPREADER	56	DIESEL & DEF TANKS	70	STOCK TRAILERS	88
DOYLE FERTILIZER TRAILER	57	FUEL TANKS	71	TRUCK DECKS	88
FERTILIZER SPREADERS	57			SPECIALTY TRAILERS	89
ROTARY CUTTERS	58	AG DRONES		SLED TRAILERS	90
SCHULTE ROCK REMOVAL	60	DJI DRONES	72	UTILITY TRAILERS	91
SNOW BLOWERS	61				
BOX SCRAPERS & GRADERS	62	TOPKROP FERTILIZERS		RENTALS	
ROTOTILLERS	63	STARTER FERTILIZERS	74	AG EQUIPMENT RENTALS	92
AGI POST POUNDERS	64	BIOSTIMULANTS	75	HAY & LIVESTOCK RENTALS	94
CHAIN HARROW & HAY RAKES	65	FOLIAR FERTILIZERS	76	LANDSCAPING RENTALS	95
BALE SPEARS & CARTS	65	HUMIC PRODUCTS	78	CONSTRUCTION RENTALS	95
BRILLION SEEDERS	66			TRAILER RENTALS	96
PALLET FORKS	66	TRAILERS			
WOOD CHIPPERS	66	SPRAYER & SEMI TRAILERS	80	ABOUT US	
BUFFER VALLEY BINS	67	FLAT DECK TRAILERS	82	LOCATIONS & MAPS	98
U-DRAIN FLOOR DRAIN	68	DUMP TRAILERS	84		
MAGNUM FUEL TRAILERS	69				



Ronald McDonald House Charities

We are proud to support the Ronald McDonald House Charities in Alberta and Saskatchewan.

Medicine Hat team member Kelvin and his family Kendall, Becky, and Nash spent 244 nights in the Ronald McDonald House in Calgary while Kendall was being treated at the Children's Hospital. We are fortunate to give back to organizations that support our staff, our communities, and beyond.



RMHC Home for Dinner Program

Our Flaman Saskatoon team volunteers regularly at their local Ronald McDonald House.



Every quarter, a new group of staff volunteers their time to prepare a nutritious meal for the families staying in the house. We are happy to take part in such an impactful initiative and look forward to helping again in the future.

JOIN OUR TEAM!

At Flaman, it's our people that make our company great. We support our staff with opportunities for growth, flexibility, and a healthy work-life balance.

We're always looking for individuals to join our team in a variety of positions, from sales, service, and yard support to accounting, administration, and more.

Interested in joining the Flaman team?

flaman.com/careers





AGI FLAT BOTTOM BINS

FLAT BOTTOM BINS

Commercial Series capacity up to 684,240 BU

Farm Series capacity up to 73,790 BU

STANDARD FEATURES

- 4" corrugated sheets
- Roof manhole
- 30° roof corrugated with 3" ribs
- Spiral staircase
- Roof ladder
- 40" filler cap remote opener
- Large 64" x 30" walk through door

OPTIONS

- Temperature and moisture cables
- U-Trough unload
- Full floor aeration systems
- Round or gooseneck vents
- Exterior stiffeners
- 9" bin sweep

SIZE	BU RANGE	HEIGHT
15'	2,300 – 5,100	19' – 37'
18'	3,400 – 9,800	20' – 49'
21'	4,800 – 13,400	21' – 50'
24'	6,300 – 17,600	21' – 51'
27'	8,000 – 22,500	22' – 52'
30'	10,000 – 28,000	23' – 53'
33'	14,900 – 39,800	24' – 54'
36'	15,000 – 40,000	25' – 55'
42'	21,000 – 56,000	26' – 56'
48'	28,000 – 73,000	28' – 58'



SPIRAL STAIRCASE



LARGE DOOR



STIFFENED BINS



UNSTIFFENED BINS



AGI HOPPER BIN PACKAGES

HOPPER BOTTOM BINS

**Available in 15' to 27' diameter
and sizes up to 17,020 BU**

STANDARD FEATURES

- 24" ground clearance, varies by manufacturer
- 40" lid with remote
- Manholes in roof and hopper cone
- Set up crews available

OPTIONS

- Temperature cables, moisture cables, and remote monitoring
- Spiral staircase or ladder with safety cage
- Aeration systems
- Steel skid foundation
- Bin level indicator
- Rack and pinion gates
- Roof vents
- Leg extensions

SIZE	BU	HEIGHT	AUGER
1805	4,900	33' 10"	61'
1806	5,679	37' 6"	66'
2105	6,893	35' 11"	61'
2106	7,953	39' 7"	70'
2406	10,437	42' 4"	71'
2407	11,710	43' 11"	84'
2707	15,250	46'	84'
2708	17,020	49' 8"	94'

BU capacity may vary depending on cone manufacturer
OTHER SIZES AVAILABLE



CUSTOM CONCRETE FOUNDATIONS



ROOF VENTS



SAFETY CAGES



AERATION SOLUTIONS



MERIDIAN GALVANIZED BINS

FLAT BOTTOM BINS

Available in sizes up to 56,000 bushels

STANDARD FEATURES

- Heavy galvanized sheets for superior strength
- Double bolted vertical seams
- 30° roof slope and large bin lid
- Exterior side wall and roof ladder
- 3 panel walk-in door

OPTIONS

- Full floor aeration (.050 perf.)
- Welded truss supports
- 11" U-Trough unload and 7.25" bin sweep
- Roof vents (18" rd.) and fans
- Interior sidewall ladder
- Spiral staircase (single or dual platform)
- Turn-key packages available – concrete pads and full assembly included

SIZE	BU RANGE
15'	2,876 – 4,006
18'	4,195 – 9,893
21'	5,781 – 13,527
24'	7,643 – 17,772
27'	9,798 – 22,613
30'	12,242 – 28,069
33'	14,988 – 34,154
36'	18,044 – 40,822
42'	25,133 – 56,143



STIFFENED BINS



SPIRAL STAIRCASE



CONCRETE PADS



UNSTIFFENED BINS



MERIDIAN HOPPER COMBOS

HOPPER BOTTOM BINS

Available in sizes up to 13,600 bushels

STANDARD FEATURES

- 35° hopper cone and 30° roof slope
- HSS Tubing – legs and supports
- Heavy galvanized sheets for superior strength
- Double bolted vertical seams
- 27" bin lid with remote opener
- Rack and pinion unload gate
- Exterior side wall and roof ladder
- Manhole and manway

OPTIONS

- Double, triple, or quad skids
- Vertical or horizontal aeration
- Bin level indicator
- Spiral staircase
- Temperature and moisture monitoring
- Aeration fan

SIZE	BU
18' 5 Ring	4,870
18' 6 Ring	5,684
21' 5 Ring	6,759
21' 6 Ring	7,869
24' 5 Ring	9,049
24' 6 Ring	10,498
27' 6 Ring	13,600

FULLY ASSEMBLED COMBOS

Set up on farm (18', 21' & 24')

24' cone – split bolt together or fully welded



SKID OPTIONS



LADDER CAGE



FALL ARREST SAFETY CABLES



MERIDIAN SMOOTHWALL BINS

GRAIN & FERTILIZER BINS

All-welded, smoothwall construction

Meridian's seamless interior allows for safe and easy unloading of grain and other material, while preventing clogs, reducing maintenance time, and lowering the risk of contamination at prices comparable to corrugated hopper storage.

STANDARD FEATURES

- Min. 40° hopper cone and 35° roof slope
- Powder coated paint
- Rack and pinion slide gate
- Complete sidewall and roof ladder
- Vented top lid
- Pokehole and bottom manway

OPTIONS

- Aeration systems
- Temperature and moisture cables
- Roof manhole
- Ladder cage and handrails

GRAIN MAX BINS

OTHER SIZES AVAILABLE

MODEL	BU	HEIGHT	AUGER
GM2300	2,301	26' 3"	46'
GM3000	3,264	28' 11"	51'
GM4000	4,118	33' 11"	61'
GM5000	4,973	38' 11"	71'
GM5300	5,324	35' 6"	61'
GM6400	6,405	40' 6"	71'
GM7500	7,488	45' 6"	76'

FERTILIZER BINS

OTHER SIZES AVAILABLE

MODEL	CAPACITY	HEIGHT	AUGER
1412	69 MT	25' 3"	46'
1615	108 MT	28' 11"	51'
1620	136 MT	33' 11"	61'
1625	165 MT	38' 11"	71'
1630	193 MT	43' 11"	71'
1820	176 MT	35' 6"	61'
1825	212 MT	40' 6"	71'



VIEW GLASSES



SKID FOUNDATION



LADDER CAGE & HANDRAILS



WESTEEL SMOOTHWALL BINS

GRAIN BINS

Westeel Magnum-G smoothwall bins store grain, seed, and feed safely with easy clean-out and corrosion protection.

Constructed with heavy-duty steel, a superior paint finish, and exceptional clean-out, Westeel bins are designed for optimal strength and longevity.

MODEL	BU	HEIGHT	AUGER
1208G	1,162	19' 1"	36'
1412G	2,016	23' 7"	41'
1612G	2,734	25' 9"	46'
1616G	3,413	29' 9"	51'
1620G	4,092	33' 9"	61'
1624G	4,771	37' 9"	61'
1628G	5,394	40' 11"	71'
1630G	5,733	42' 11"	71'
1632G	6,073	44' 11"	71'

FERTILIZER BINS

Westeel Magnum-F smoothwall hopper bottom bins are ideal for safe, long-term storage of fertilizer, grain, and seed.

Westeel Magnum smoothwall bins are designed to provide years of trouble-free clean-out and superior protection from corrosion.

MODEL	CAPACITY	HEIGHT	AUGER
1208F	39 MT	19' 1"	36'
1408F	50 MT	19' 7"	36'
1412F	67 MT	23' 7"	41'
1416F	85 MT	27' 7"	46'
1612F	91 MT	25' 9"	46'
1616F	114 MT	29' 9"	51'
1620F	136 MT	33' 9"	61'
1624F	159 MT	37' 9"	61'
1628F	180 MT	40' 11"	71'

AVAILABLE OPTIONS



LADDER CAGE & HANDRAILS



HD SKID FOUNDATION



REMOTE VENTED TOP LID



AERATION SOLUTIONS



AERATION FANS

3 Year Warranty and CSA Approved

FULL CENTRIFUGAL FAN

3 HP – 10HP

- Suited for Grain Guard Rocket
- Maximum airflow at higher static pressures
- 20% more air flow than an in-line fan
- Call about 3 phase options



INLINE FAN

3 HP – 15 HP

- Suited for round duct, 1/2 round systems
- Call about 3 phase options



TURBO FAN

7.5 HP

- Suited for round duct, 1/2 round systems
- Excellent airflow at higher static pressures
- 20% more air flow than an in-line fan
- 3 phase not available

Limited quantities of 3 HP & 5 HP turbo fans available in Alberta



FAN COVERS

Protect your fans from the elements



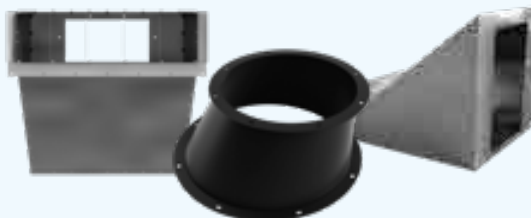
SHOWER CAP



CANVAS AIR SOCKS

GRAIN GUARD TRANSITIONS AND ADAPTERS

Easily adapt aeration fans and heaters to multiple aeration systems.



FAN CLAMPS

Easily move your fans from bin to bin

AERATION SOLUTIONS

AIRMAX AERATION

Natural air drying system

Designed to easily retrofit your existing hopper bins, the Airmax system cools and dries grain and seed, minimizes the risk of bugs, allows for earlier harvest, and significantly decreases the chance of spoilage in the bin.

Available in Alberta only



VERTICAL &
HORIZONTAL
AERATION

HELPER SYSTEM

An economical alternative to full floor aeration



Increases air flow and can be installed in any diameter bin.

STRAIGHT DUCT

Replace older corrugated pipe

18" & 24" models available that can be made to any length.



CROSS DUCT

Easily retrofits into existing flat floor bins on wood or cement floor. Fully expandable and great for quonsets.

Available in Alberta only



Easy, two person
"do-it-yourself"
installation



RETRO
ROCKET

GRAIN GUARD ROCKET AERATION

Designed for hopper bins

Provides more air delivery to the centre of the bin where air is most difficult to move.

This rocket system lets you quickly and easily retrofit existing hopper bottom and smoothwall bins.



NEXT
GENERATION
ROCKET

AGI HEATERS

60,000 – 200,000 BTU

Designed to supplement natural air drying systems.

Available in Alberta only



VENT-A-LID

A specially designed ventilation tool

Creates ventilation at the highest point of your bin, where heat naturally wants to flow.

GATCO GRAINAIR TUBE

Maximize existing aeration systems by increasing airflow with an aeration booster.

- Removes heat from your grain using natural convection
- Allows heat and moisture to escape the bin quickly
- Can be used to cool flat and hopper bottom bins, sheds, quonsets, and grain piles



Vent-a-lid
allows your
bin lid to be
fully closed
without worry



WIRELESS GRAIN MONITORING

BIN-SENSE LIVE

Ensure the quality of your stored grain

A proven off-the-grid grain monitoring system that keeps you connected to your bin conditions right from your smartphone.

- Control fans remotely from phone or computer
- Temperature and/or moisture sensing
- Hourly grain temperature and moisture readings
- Monitor grain inventory levels
- Compatible with most existing installed cables
- Entirely battery and solar powered

BIN-SENSE PLUS

Featuring ambient air temperature and humidity readings, Bin-Sense Plus offers automatic grain conditioning and aeration fan control for optimized grain quality.

BIN-SENSE SOLO

A low-cost solution for small to medium-sized grain bins, delivering daily information right to your mobile or desktop device.

BIN-SENSE DIRECT

Transform your smartphone or tablet into an on-site handheld grain monitoring reader.



MONITORING CABLES
Sense the temperature and moisture of stored grain



FAN CONTROLLER
Control your fans remotely from a mobile device

BIN ACCESSORIES

BIN LEVEL INDICATORS *Availability varies by province*



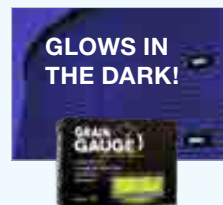
Lev ALERT



Saf-T-Fill



Brownlees



Grain Gauge



FALL ARREST SAFETY CABLES

Includes 4' lanyard, fall protection harness, and rope grab.



REPLACEMENT BIN LIDS

Retrofit your older bins with a remote lid opener. One size fits all 36" bin lid.



BIN ANCHORS

Secure flat bottom or hopper bins that are mounted on a steel floor or steel skid foundation.



HOPPER DROPPER

Spill-Proof Canvas Hopper Bag

AUGER ACCESSORIES

DOWNSPOUTS

Poly Auger Downspouts

8" Round
10" Round
10" Oval
13" Round



No Snag Auger Downspout

Directs grain right into the bin without snagging.

10" No Snag
13" No Snag
16" No Snag

Colour varies by province



Never Spill Auger Downspout

No checking, no overfilling, no plugging augers!

10" w/ alarm
13" w/ alarm
16" w/ alarm

**ALARM SYSTEM
INDICATES A FULL BIN**



POLY AUGER HOPPERS



Standard Auger Hopper



Big Daddy Hopper



Agri-Hopper



The Big Boot

SHOVEL HOLDER



43-LITRE FUEL TANK

Mounting kit available



AUGER LIGHT OPTIONS

3 light kits or LED light kits



NEU-TECH AUGER HOPPER

Aluminum spring-loaded hopper

With one quick latching action, this collapsible hopper folds and stores securely against your auger—sliding under your bin easily, without obstructing your view of where you want it placed. Unhook the latch, and it snaps back into shape so you can get on with your grain handling.



GATCO AUGER HOG

Increase your auger capacity
by up to 20–30%

An adjustable, detachable auger hopper for your load out grain auger. It attaches and detaches in seconds with a single mount pin, stays on your auger between bins, and prevents product loss due to spitting, blowing, or overflowing.

AVAILABLE
FOR 8/10" AND
12/13" AUGERS

*Optional fertilizer screen
available*





DESIGN & LAYOUT



SETUP & INSTALLATION



MAINTENANCE & SERVICE

GRAIN HANDLING

From start to finish.

We specialize in full solution grain handling setups, grain dryer systems, grain cleaning and processing plants, and automated bin sites.

Our team of industry experts and service specialists can help with any aspect of business related to your grain handling equipment including:

- Design and layout
- Equipment and parts
- Setup and installation
- Maintenance and service

We can provide, install, and service:

- Horizontal, incline, and overhead conveyors
- U-trough screw conveyors
- Bucket elevators and pneumatic blower systems
- Grain drying equipment
- Support towers, safety structures, and catwalks

Ask about available automation options!





AGI NECO GRAIN DRYERS



SIZE	BU/HR
16'	674 – 1,539
24'	1,155 – 3,750

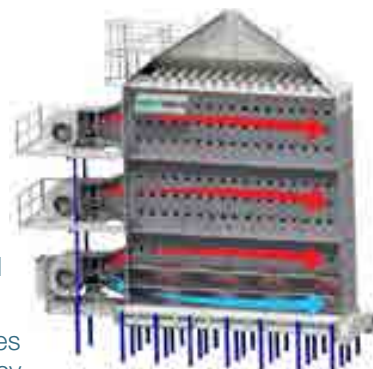
AGI MIXED FLOW DRYER

16' and 24' dryers available

The AGI mixed flow grain dryer is one of the most efficient dryers on the market, maximizing the test weight of dried grain and lowering your energy bill.

FEATURES

- Mixed flow drying process maintains the highest quality grain while reducing the risk of crop damage
- No screens to clean or get plugged, so airflow is maintained throughout the drying season
- Even heating and cooling provides better kernel to kernel consistency
- Up to 30% more fuel efficient than conventional screen dryers
- Blower VFDs provide additional control of airflow while unload VFDs can fine-tune unload speed to reduce grain damage
- Suitable for most crops including specialty beans
- Quiet and efficient centrifugal fans
- Flexible operation allows dryer to run in full heat or heat and cool mode on all models



Remote monitoring and management

Dryer Control Systems

Commander PLC-based control system offers an easy-to-use touch screen navigation, tracking and graphic capabilities, and alarm and troubleshooting assistance.

Dryer Master sensors measure the moisture of the grain in real time and adjusts output speed to meet moisture setpoint.

WALINGA ULTRA-VEYOR

WALINGA BLOWER SYSTEM

Capacities up to 2,300 BPH

The Walinga Ultra-Veyor is the ultimate grain transfer system, using air to move product safely, easily, and without elevator legs or portable augers.

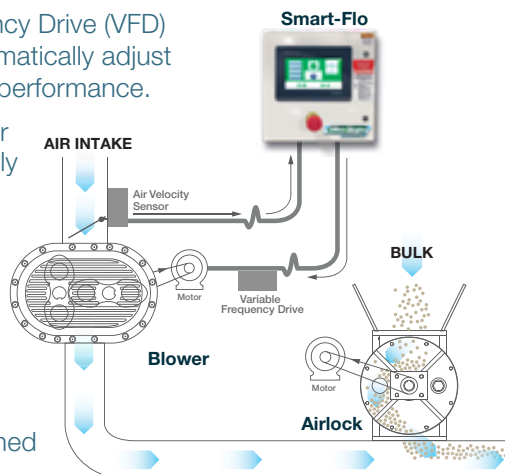
FEATURES

- Economic and affordable solution for long distance conveyance
- Gentle on product (including chickpeas)
- Flexible system for future expansion and growth
- Simple and easy installation
- Maintenance is performed easily at ground level with simple access to all filters, belts, and lubrication points
- Super Hardened SRT blower is built for longevity
- Airlock package is designed for maximum efficiency and minimal grain damage

SMART-FLO

Walinga's Variable Frequency Drive (VFD) systems monitor and automatically adjust motor speeds to optimize performance.

- Equipped with a sensor and PLC that continually monitor the system
- Reduces product damage
- Adjusts speeds to maximize transfer capacity and reduce energy costs
- Completely self-contained system





BUCKET ELEVATORS & CHAIN CONVEYORS

AGI HUTCHINSON GRAIN PUMPS

Capacity up to 10,000 BPH

- Gentle on product with low horsepower requirements
- Available in 6", 8", 10", and 12"



PORTABLE GRAIN PUMP



GRAIN PUMP LOOP



GRAIN PUMP DOUBLE RUN

LAMBTON & NORSTAR BUCKET ELEVATORS

Capacities up to 20,000 BPH

Bucket elevators, support structures, bucket cups, belting, and accessories.



LAMBTON & NORSTAR CHAIN CONVEYORS

Customize your grain handling

Horizontal, incline, and overhead drag chain and screw conveyors.



STATIONARY AUGERS



AGI WRX TRUCK AUGER

For grain dryers setups and other stationary applications

- Lengths from 31' to 76' with 8" or 10" tube diameter
- Five drive options



UTILITY AUGERS

For semi-permanent or permanent grain handling installations

Available sizes: 4", 6", 8", 10", 13"

TRANSFER AUGERS & CONVEYORS



PRO GRAIN T-810 Transfer Auger

- 8" diameter, 10' long
- 6.5 HP Honda motor



AGI Low-Profile Transfer Augers

- 8" or 10" diameters
- 10 3/4" high
- Hydraulic, gas, or electric drive options



AGI BATCO BCX² 1515 Low-Profile Transfer Conveyor

- 10" diameter
- Move up to 6,000 BPH
- Hydraulic, gas, or electric drive options



CONVEY-ALL Transfer Conveyors

- Move up to 14,000 BPH
- 10" to 14" diameters and 16" or 22" belts
- Hydraulic, gas, or electric drive options



AGI HUTCHINSON Drive-Over Chain Conveyor

- Low profile 8 3/4" unit
- Move up to 8,000 BPH
- 10 HP electric drive (hydraulic also available)



AGI BATCO PITSTOP Portable Drive-Over Pit

- 1800 & 2400 Series
- Move up to 18,000 BPH
- Hydraulic, gas, or electric drive options



AGI XTA AUGERS



LED WORKING LIGHTS



DOUBLE BANDED BELTS



**REVERSING GEARBOX
& ELECTRIC CLUTCH**

AGI XTA TRUCK AUGER

Capacities up to 5,500 BPH

Featuring an optional self-propelled heavy-duty mover kit with all-wheel drive, hydraulic steering, and rugged all-terrain tires, the AGI XTA is a fast and convenient solution for loading grain. Available in 8" or 10" models with lengths from 31' to 51'.

STANDARD FEATURES

- AGI mover kit
- Electric clutch
- Large fuel tank
- Reversing gearbox
- Light kit

OPTIONS

- Heavy duty mover kit
- EFI engines available



HEAVY-DUTY MOVER KIT

The narrow, compact design gives better access to larger diameter hopper bins and offers a sharper turning radius.



AGI XTA³ DIESEL

Move up to 10,000 BPH with the new XTA³ 13" x 41' auger. Featuring a 56 HP Kohler diesel engine and diesel direct drive system.

NEW



AGI UTX AUGERS

AGI UTX U-TROUGH AUGER

Capacities up to 9,000 BPH

Built to withstand harsh physical demands, the high-capacity AGI UTX 10" x 44' auger features a unique U-Trough design that reduces the chance of grain damage or plugging.

STANDARD FEATURES

- Collapsible spring-loaded hopper extension
- Reversing gearbox
- Heavy duty mover kit with joystick
- Triple groove electric clutch
- Large fuel tank
- Hydraulic winch



VANGUARD 40 HP EFI



LED WORKING LIGHTS



HEAVY-DUTY MOVER KIT



**SPRING-LOADED
HOPPER EXTENSION**

Quickly and easily fit under your lowest and hardest to reach bin unloads and hopper bins with this collapsing hopper extension.



**REVERSING GEARBOX
& ELECTRIC CLUTCH**

Start and stop the auger without shutting down the engine and safely reverse the auger at all angles with the reversing gearbox.



AGI SWING AUGERS

X² 10 – 10" Auger **Capacity up to 6,000 BPH**

Lengths from 63' to 83'
Available with Power Swing

X² 13 – 13" Auger **Capacity up to 11,000 BPH**

Lengths from 74' to 114'
Available with Power Swing
or X-Tend

X² 16 – 16" Auger **Capacity up to 23,000 BPH**

Lengths from 85' to 125'
Available with Power Swing
or X-Tend



STEERABLE AXLE

Offers easy maneuvering around tight bin yards and corners.

AGI X² SERIES SWING AUGER **Capacities up to 23,000 BPH**

Featuring a commercial strength scissor-lift frame and a redesigned open discharge spout, durable boot, and steerable axles, the high-capacity AGI X² Series swing auger provides fast and efficient grain transfer to your large bins.

STANDARD & OPTIONAL FEATURES

- Wireless electric power swing
- Hydraulic hopper winch
- 1000 RPM reducer/reverser
- Light kit
- Poly flex downspout



POWER SWING

Features 12V remote electric or hydraulic drive and a low-profile hopper with dual flighting. Available on all X² models.



X-TEND OPTION

Offers the convenience of being able to extend, move side-to-side, and retract, without having to move or reposition the truck.



MERIDIAN SWING AUGERS

MERIDIAN SWING AWAY AUGER

Capacities up to 15,000 BPH

Move your grain quickly and efficiently with a Meridian swing auger. Built with a heavy-duty undercarriage and truss system, and featuring a longer and wider hopper to maximize reach, increase handling capacities, and reduce overflow and spillage.

STANDARD FEATURES

- Remote controlled electric swing
- Hydraulic hopper winch
- Heavy-duty reversible gearbox
- LED light kit
- Poly flex downspout

SLMD12 – 12" Auger Capacity up to 9,000 BPH

Lengths from 72' to 95'

Available with Electric Swing

SLMD13 – 13" Auger Capacity up to 13,000 BPH

Lengths from 75' to 115'

Available with Electric Swing
or Rodono

SLMD14 – 14" Auger Capacity up to 15,000 BPH

Lengths from 95' to 115'

Available with Electric Swing
or Rodono



REMOTE CONTROLLED ELECTRIC SWING

A wireless remote control mover designed to increase farm safety and improve working conditions.
Available on all models.



RODONO RETRACTING SWING OPTION

Designed to extend, retract, and swing side-to-side without having to reposition the truck, significantly reducing your unloading time.



CABLE TRUSS SYSTEM

Heavy-duty cable truss system provides stability for heavy loads.



MERIDIAN TRUCK AUGERS

NEW

MERIDIAN 13-46 HYDRAULIC Diesel-Powered Auger

Suspended auger flighting with hanger bearings makes the TL13-46 one of the quietest running augers available.

STANDARD FEATURES

- 46' long with 13" tube
- Hydraulic drive
- 74 HP Hatz diesel engine
- Suspended flighting with hanger bearings
- 4 wheel mover
- Engine controls on mover
- LED light kit

MERIDIAN TRUCK LOAD AUGER

Capacities up to 10,000 BPH

Featuring an improved undercarriage and axle design for better weight distribution and a self-leveling motor mount for consistent belt tension regardless of the height of the auger.

STANDARD FEATURES

- 8", 10", or 12" tube
- Lengths from 39' to 59'
- Shovel and shovel holder
- Mover kit
- Reversible gearbox
- Winter kit
- LED light kit

12-39 OPTIONS

- Diesel engine
- 7' intake extension



4 WHEEL MOVER KIT



7' INTAKE EXTENSION

Designed to fit under 27' hopper bins



MERIDIAN CONVEYORS

MERIDIAN BIN FILL SWING CONVEYOR

Capacities up to 12,000 BPH

Redefining efficiency with fast but gentle handling of your grains. Available in lengths of 90' to 120', Meridian bin fill conveyors feature a 20" wide chevron-style belt in an enclosed 10" tube.

STANDARD FEATURES

- Collapsible intake hopper
- Heavy duty undercarriage
- Hydraulic lift
- Round steel fixed spout
- 4-way hydraulic swing hitch
- End PTO drive
- Electric swing mover
- Electric winch kit
- HD light kit
- 13" flexible downspout



**COLLAPSIBLE
INTAKE HOPPER**



**ELECTRIC
SWING MOVER**

MERIDIAN CANOLA READY Truck Load Conveyor

Available in 45' or 55' lengths, these new oilseed certified conveyors from Meridian feature adjustable double flashing and a skived belt for a tighter hopper seal.

STANDARD FEATURES

- 20" belt and 10" tube
- 40 HP Vanguard engine
- 4-way hydraulic mover
- Electric clutch
- Joystick power steering
- LED light kit
- 13" flexible downspout





CONVEY-ALL TL CONVEYORS



ELECTRIC ACTUATOR



COLLAPSIBLE HOPPER



OILSEED CERTIFIED

Oil-damage prevention features include extra flashing and scrapers along the skived belt, keeping fine material on the belt and preventing build-up.

CONVEY-ALL TRUCK LOAD CONVEYOR

Capacities up to 9,000 BPH

Self-propelled, self-contained, and completely hydraulic. Convey-All's high-capacity truckload conveyors are perfect for moving product from your bins to your truck and can safely handle cereals, pulses, oilseeds, and fertilizer.

STANDARD FEATURES

- Available in 50' or 58' lengths
- 16" chevron belt and 10" tube
- Collapsible hopper
- Full length windguards
- Heavy duty undercarriage
- Hydraulic lift
- Self-contained hydraulic drive
- Heavy duty mover kit

OPTIONS

- Hatz diesel engine
- Stainless steel hopper and discharge hood



VOLT BATTERY OPTION



STAINLESS STEEL ENDS



CONVEY-ALL SWING CONVEYORS

CONVEY-ALL BIN FILL SWING CONVEYOR

Capacities up to 12,000 BPH

Leave the tractor in the shed with Convey-All's self-propelled, self-contained bin fill conveyors. Featuring a remote controlled, 360° swing with a long reach for maximum accessibility.

STANDARD FEATURES

- Lengths from 90' to 120'
- 10" or 14" tube
- 16" or 22" belt
- Collapsible hopper
- Full length windguards
- Heavy duty scissor lift undercarriage
- Hydraulic winch
- Positive pinch drive box

OPTIONS

- Oilseed certified
- Self-propelled mover kit
- Diesel drive
- Stainless steel package



FULL LENGTH WINDGUARDS



POSITIVE PINCH DRIVE BOX



OILSEED CERTIFIED



DIESEL DRIVE OPTION



COLLAPSIBLE HOPPER



AGI BATCO CONVEYORS

AGI BATCO SWING CONVEYOR

Capacities up to 14,000 BPH

Available in lengths from 90' to 120', our high-capacity, low maintenance AGI Batco swing conveyors will save you time and money.

STANDARD FEATURES

- 10" or 14" tube
- 15", 20", or 24" belt
- Hydraulic winch kit
- Electric swing away kit
- Light kit
- Weather guards



AGI BATCO BCX³ 1549 FIELD LOADER

Capacities up to 10,000 BPH

The AGI Batco BCX³ field loader is equipped to handle tough jobs and confidently moves all commodities, reducing the need to have multiple portable handling solutions on your farm.

STANDARD FEATURES

- 10" tube and 15" belt
- 37 HP Vanguard EFI engine
- Hydraulic steering
- Heavy duty all wheel drive
- Soft start electric clutch
- Light kit
- 32" wide hopper

OPTION

- Top mount or under mount



**37 HP VANGUARD
EFI ENGINE**



**HEAVY DUTY
AWD MOVER KIT**



AGI BATCO CONVEYORS

AGI BATCO UCX³ 1549 U-TROUGH CONVEYOR Capacities up to 12,500 BPH

The unique U-Trough shape delivers high capacities without compromising the gentle handling of your commodity.

STANDARD FEATURES

- 10" tube and 15" belt
- 40 HP Vanguard EFI engine
- Hydraulic steering
- Heavy duty all wheel drive
- Triple belt electric clutch
- Light kit
- Redesigned hopper

AWD MOVER KIT

- Redesigned built-in braking system
- 160° turning radius for tight yards
- Better traction
- Drop-and-go wheel move for quick set-up
- Extra 15" discharge height

ALL FARM COMMODITY SYSTEM

Both the BCX³ and UCX³ feature a belt brush, two belt scrapers, and the turbo clean wash system, designed to keep debris off your belt and make clean-out easier than ever.



NEW

AGI BATCO UCX⁴ 1549 FMD Diesel Conveyor

The UCX⁴ is designed for efficient grain handling with minimal fuel use and downtime. It runs on a turbocharged diesel engine, delivering high torque for demanding farm operations.

STANDARD FEATURES

- Capacity up to 10,500 BPH
- 10" tube and 15" belt
- 24 HP Kohler diesel engine
- Electric clutch
- Direct drive gearbox
- Hydraulic pump



Gooseneck Portable Bench with Gravity Table & Debearder



Portable Plant Bench with Gravity Table



GRAIN CLEANERS

BENCH AIR & SCREEN GRAIN CLEANERS

Gentle feeder will not damage your crops

FEATURES

- An affordable way to clean your grain
- Large cleaning deck with a gentle vibratory feeder for accurate air separation
- Low horsepower requirements
- Designed for durability and accuracy
- Easy to change screens

Specialty and custom-built units also available



BENCH 54108 MOBILE UNIT



BENCH MARKET



BENCH FULL SIZE



BENCH MID-SIZE



BENCH MINI

MODEL	MARKET	54108	DOUBLE SHOE	FULL SIZE	MID SIZE	MINI
Capacity	1,500 BPH <i>dockage removal</i>	500 BPH <i>for wheat</i>	500 BPH <i>for cereals</i>	300 BPH <i>for cereals</i>	100 BPH <i>for cereals</i>	30 BPH <i>for cereals</i>
Screen Size	54" x 36" (6)	54" x 36" (9)	54" x 36" (12)	54" x 36" (6)	36" x 54" (2)	27" x 36" (2)
Deck Size	54" x 108"	54" x 108"	54" x 72"	54" x 72"	36" x 54"	27" x 36"
Horsepower	5 HP on Fan 2 HP on Shoe	7.5 HP on Fan 3 HP on Shoe	10 HP on Fan 3 HP on Shoe	5 HP on Fan 2 HP on Shoe	3 HP on Fan 1 HP on Shoe	2 HP on Fan 1/2 HP on Shoe
Width	Please call	Please call	8' 1"	6' 8"	4'	3'
Height	Please call	Please call	8'	5' 6"	4' 10"	4'
Weight	Please call	Please call	4,500 lbs	2,400 lbs	1,780 lbs	580 lbs

LMC VISTASORT COLOUR SORTERS

Remove foreign materials, colour defects, splits, immature kernels, and other contaminates.

FEATURES

- High-precision, long-lasting ejectors
- DSP FPGA chip technology
- High-resolution CCD and infrared cameras
- Intelligent image processing algorithm
- Operator-friendly machine interface



MODEL	CCD - 1 - 63	CCD - 2 - 216	CCD - 3 - 189	CCD - 4 - 252	CCD - 5 - 315
Capacity (tonne/hr)	1–5	2–6	4–9	5–12	6–15
Max Power Consumption	1.5 kW	1.5 kW	2.2 kW	2.9 kW	3.6 kW
Dimensions (W x D x H)	41" x 58" x 55"	53" x 60" x 83"	63" x 60" x 83"	76" x 60" x 83"	88" x 60" x 83"
Weight	970 lbs	1,354 lbs	1,739 lbs	1,839 lbs	2,319 lbs

KWIK KLEEN GRAIN CLEANERS

Remove dockage and reduce the chance of overheating by pre-cleaning your grain before shipping or storing it.

- Used for sizing barley and removing small seeds and other dockage
- Easily removable screens
- More than 20 screen sizes available
- Quick and easy clean out
- Available with electric or hydraulic drive



MODEL	DIMENSIONS	# OF AUGERS	CAPACITY	DRIVE	TUBES	SCREENING AUGER
572	108" x 58"	5 x 72"	7"–8" Auger	12–13 GPM or 5 HP	5	4"
772	108" x 72"	7 x 72"	10" Auger	14–15 GPM or 7.5 HP	7	4"

GCS GRAIN CLEANERS

Gentle, fan powered grain cleaning

- No screens required
- Simple to run
- Low energy consumption
- Low initial cost
- Easy transition between different types of crops



GCS 450



GCS 600 DOUBLE SHOE

Scalps and sifts, two separations in one pass.

GCS SCALPER

High-capacity and cost-effective. Removes large dockage at up to 1,000 bushels/hour.



MODEL	GCS 200	GCS 450	GCS 600 DOUBLE SHOE	GCS 750	GCS 1000	GCS 1000 SCALPER	GCS 1400	GCS 2200
Capacity	200 BPH	450 BPH	600 BPH	750 BPH	1,000 BPH	1,000 BPH	1,400 BPH	2,200 BPH
Motor	3/4 HP	1.5 HP	1/3 HP	2 x 3 HP	2 x 1.5 HP	1/3 HP	2 x 5 HP	3 x 1.5 HP
Dimensions (L x W x H)	81"x19"x90"	94"x30"x 94"	79"x62"x68"	71"x47"x95"	94"x51"x94"	79"x56"x94"	91"x55"x95"	95"x74"x108"
Weight	400 lbs	800 lbs	700 lbs	1,600 lbs	1,800 lbs	500 lbs	1,900 lbs	2,500 lbs

SUGGESTED SCREEN SIZES FOR VARIOUS COMMODITIES



SPRING WHEAT Scalping: 12-14/64 round hole
Sifting: 5.5-6/64 slot



DURUM WHEAT Scalping: 15-16/64 round hole
Sifting: 5.5-6/64 slot



RYE Scalping: 12-13 round hole
Sifting: 5-5.5 slot



BARLEY Scalping: 16-18/64 round hole
Scalping: 10-12/64 slot
Sifting: 5.5-6/64 slot



OAT Scalping: 18-20/64 round hole
Scalping: 9-10/64 slot
Sifting: 5-6/64 slot



ESTON LENTILS Scalping: 15-16/64 round hole
Sifting: 8-10/64 round hole (fines)
Sifting: 5/64 slot (splits)



LAIRD LENTILS Scalping: 18-22/64 round hole
Sifting: 12-13/64 round hole
Sifting: 5/64 slot (splits)



FLAX Scalping: 3.5-4.5/64 slot or
4x14 wire mesh
Sifting: 5.5/64 round hole



CANARY SEED Scalping: 5/64 slot
Sifting: 4.5-5/64 round hole
Sifting: 3/64 slot



PEAS Scalping: 20-24/64 round hole
Sifting: 10-14/64 slot



CHICKPEAS Scalping: 26-32/64 round hole
Sifting: 12-16/64 slot



SOY BEANS Scalping: 20/64 round hole
Sifting: 10/64 slot



KIDNEY BEANS Scalping: 28/64 round hole
Sifting: 14/64 slot



CORN Scalping: 26-28 round hole
Sifting: 16-18 round hole



ALFALFA Scalping: 4.5/64 round hole
Sifting: 6x22 or 24 wire



CANOLA Scalping: 6.5-8/64 round hole
Sifting: 3-3.5/64 slot



MUSTARD Scalping: 6-8/64 round hole
Sifting: 3.5-4/64 slot



HEMP Scalping: 12-14 round hole
Sifting: 5.5-6 slot



CUSTOM SCREENS

Screens are available for almost any make or model cleaner and can be shipped anywhere in North America.



SLOTTED
SCREEN

SCREEN TYPES

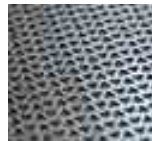
- Round Hole, Slotted, Double Cut Triangle
- Special Order: Wire Mesh, Stainless Steel Material, Stop Perforated, Bulk Perforated



ROUND
HOLE
SCREEN

WOOD & ALUMINUM FRAMES

- Custom built to your specifications



DOUBLE CUT
TRIANGLE
BUCKWHEAT

36" WIDE SHEETS

- 4/64 – 32/64 Round Hole Screen sq. ft.
- 4/64 – 14/64 Slotted Screen sq. ft.

48" WIDE SHEETS

- 4/64 – 32/64 Round Hole Screen sq. ft.
- 3/64 – 18/64 Slotted Screen sq. ft.
- Buckwheat Screen sq. ft.

HAND SIEVES

- Durable hand sieves designed for excessive use in tough environments
- Many sizes available



WOOD HAND TESTERS

- Economical hand tester kits
- Changeable screen inserts available
- Assorted kits available



Grader shells, scalper reels, and indent shells are also available.

5200-FARM
Designed for on-farm use



GRAIN ANALYSIS

Gain the advantage of knowing what your grain has to offer before sending it to market.



PERTEN AM 5200 GRAIN MOISTURE METER

Test high temperature grain straight off the dryer

Utilizing UGMA technology, the Perten AM 5200 provides an accurate and repeatable analysis regardless of temperature or crop type. This unit displays moisture, test weight, and temperature in 10 seconds (5200-A) and 25 seconds (5200-Farm).



PERTEN IM 8800 GRAIN PROTEIN TESTER

Light and compact for fast, portable grain testing

The Perten IM 8800 is a portable, near-infrared (NIR) grain analyzer designed specifically for on-farm conditions and displays moisture, protein, and oil content in just 90 seconds.

Equipped with GPS capability for protein field mapping.



PERTEN IM 9500 GRAIN PROTEIN TESTER

Commercial grain protein and moisture analyzer

Reliable, robust, and built to meet the requirements of commercial grain handling operations, the Perten IM 9500 displays moisture, protein, and oil content in less than 30 seconds.

Optional test weight module is available.

PRAIRIE GRAIN ANALYZERS MA-405 PORTABLE MOISTURE TESTER

Accurate all-in-one moisture testing

Built-in scale, thermometer, and charts allow for instant moisture, test weight, and temperature readings.

- Suitable for all grains
- No pre-weighing, temperature measurement, or chart reading required
- Measures grain of all temperatures
- Built-in thermal printer
- Easy-to-use touchscreen
- Save and share up to 500 results on your phone



NEW



LABTRONICS 919 GRAIN MOISTURE TESTER

Portable unit designed for on-farm use

Comes as a complete kit with a digital scale, Celsius thermometer, and set of charts.

AGI GRAIN VACS

Quiet, fast, and easy to use.



MODEL	VRX
Capacity	6,000 BPH
HP	85
Weight	2,950 lbs



MODEL	VR12
Capacity	10,000 BPH
HP	130
Weight	3,300 lbs

AGI VRX & VR12 GRAIN VACS

Sets the standard in efficiency, speed, and durability.

By utilizing VR technology, these machines are able to get more capacity, while reducing noise, debris, and maintenance time.

STANDARD FEATURES

- Drive shaft mounted on the outside for easy access
- Leak-proof cleanout doors can be opened without tools
- Fan lasts 25% longer than previous models
- Air throttle can manually adjust the suction to suit grain type
- Spring-loaded two flap air lock
- Chrome augers for increased durability and 1/4" thick spring-loaded chrome flighting
- Self-contained gearbox



OPTIONAL VRX DUST COLLECTOR

Don't let a little dust get in your way of moving grain.

The optional VRX dust collector is easy to attach and gives you flexibility to collect or direct the debris.

WALINGA GRAIN VACS

Designed for maximum performance.



MODEL	6614 DLX
Capacity	3,200 BPH
HP	110 to 130
Weight	3,014 lbs



MODEL	7614 DLX
Capacity	5,000 BPH
HP	130 to 150
Weight	3,302 lbs

WALINGA AGRI-VACS

Gives one person total grain-handling capability

Walinga DLX models offer additional wear protection with pre-cleaner and a rhino lined receiver tank and boom cyclone.

STANDARD FEATURES

- 6" and 7" PTO models
- Self-contained hydraulics
- Super hardened positive displacement blower
- Hose carrier
- Hydraulic boom rotation
- Hydraulic boom lift/lower
- Stainless steel hoses
- Rubber clean-up line
- Suction nozzle
- Dual inlets and fenders



3510 GAS Portable Self-Contained Clean Up Model

Features: 26.5 HP EFI engine, forklift pocket, portable steel discharge line, pneumatic tires, cleanup line, and nozzle.



PRO GRAIN BAGGERS

PRO GRAIN B-1610

Bag up to 24,000 BPH

Featuring a 16" auger, the Pro Grain B-1610 has the capability of bagging up to 24,000 bushels per hour. This 10' bagger offers two loading options: a hopper or an auger/conveyor inlet.

PRO GRAIN B-2010H

Bag up to 32,000 BPH

The B-2010H is a 10' bagger with a hopper only option. The 20" auger allows for quick unloading of grain bags up to 32,000 bushels per hour.

**OPTIONAL ROLL TARP
AVAILABLE ON BOTH MODELS**

Pro Grain Equipment baggers are an efficient and affordable alternative to hopper bin storage.

STANDARD FEATURES

- Electric bag winch
- Brake pressure gauge
- Electric actuators
- Safety stairs and platform
- Control panel and hand wheel
- All-terrain tires

LOADING OPTIONS

- 8' x 8' big mouth loading hopper
- Telescoping swing drive, 14" transfer auger
- Telescoping swing drive, 24" conveyor



PRO GRAIN T-1425 TRANSFER AUGER

Works hand in hand with your grain bagger

An economical and efficient solution for transferring grain at up to 11,500 BPH.

- Telescoping transfer auger
- 14" diameter, 25' long, 22 GPM @ 2200 PSI
- Hydraulic mover kit



PRO GRAIN EXTRACTORS

PRO GRAIN R-5 BAG ROLLER

Clean up used grain bags with ease

The redesigned Pro Grain R-5 bag roller is capable of rolling 500' grain bags into recycle-ready bales in all temperatures.

STANDARD FEATURES

- Hydraulic spear
- High-torque hydraulic drive motor
- Hydraulic bale kick
- No-catch bag guide
- Twine wrap system
- Trailer model options available



PRO GRAIN E-1610 BAG EXTRACTOR

Move up to 10,500 BPH

The Pro Grain bag extractor delivers fast, dependable, and efficient grain transfer from your grain bags to your transport truck.

STANDARD FEATURES

- 16" main auger and 9" cross auger
- Hydraulic flow controls
- Roller drive system
- Adjustable bag knife
- 80 HP required
- 15 GPM @ 2,200 PSI



HYDRAULIC FLOW CONTROL



ADJUSTABLE SPOUT



9" CROSS AUGER WITH CONTINUOUS FLIGHTING



TRIDEKON EXTRACTORS

TRIDEKON GRAIN BOSS GRAIN BAG EXTRACTOR

Move up to 12,000 BPH

Canadian-made for Canadian winters. The Tridekon Grain Boss extractor increases productivity, maximizes efficiency, and minimizes downtime.

STANDARD FEATURES

- 360° rotating unload auger (13" or 16")
- Narrow pull-through roller design
- Steerable drive wheels
- 120 HP required
- 6 GPM @ 2000 PSI
- Optional 12' bag extension



PULL-THROUGH ROLLER



STEERABLE WHEELS



360° ROTATING UNLOAD AUGER

GRAIN BAGS

A cost-effective solution for temporary grain storage.

Store high-moisture grain long-term or short-term before drying.

FEATURES

- Puncture and tear resistant
- All-weather design built to last even in extreme temperatures
- Built to withstand extended UV exposure
- Sizes range from 9' to 12' wide and 250' to 500' long

*Sizes and brands vary by location.
Other sizes available by special order only.*

Ask about bulk bag pricing!





J&M GRAIN CARTS



J&M IFARM SCALE

A single device plugs in to load cell junction box and via Bluetooth communicates scale info to either your cell phone or tablet.



TRACK SYSTEM

Minimize compaction with a low-maintenance track system. Available on select models.

RIGHT-SIDE AUGER

Available on select grain cart models, the right-side auger design further increases operator visibility, safety, and efficiency.



12 & 22 SERIES

X-Tended Reach Grain Carts

The rigid upper auger has been extended for even greater outward, upward, and forward reach, all while folding diagonally along the front of the cart for compact storage.

MODEL	BU	UNLOAD TIME	AUGER SIZE
812-18S	875	1.8 min	18"
1012-20S	1,025	1.8 min	20"
1112-20S	1,150	1.9 min	20"
1222-20S	1,250	2.0 min	20"
1412-20S	1,400	2.3 min	20"
1412-20T	1,425	2.3 min	20"
1522-20S	1,475	2.5 min	20"
1522-20T	1,500	2.5 min	20"

* Bushel capacity measured with #2 corn at 15% moisture content

** Time varies with RPM and moisture content of grain

STANDARD FEATURES

- X-tended reach auger
- Side-shooter spout
- Side-mounted ladder
- Scale with iFarm system
- Roll tarp

COLOUR OPTIONS:

- Green
- Blue
- Red
- Black



OPTIONS

Available with IF1250/50R32 or IF1400/45R42 tires (the largest ag tire in the world) or a Stabilizer Trax2 track system.



LED SCOREBOARD DISPLAY

NEW 14 SERIES X-Tended Reach Grain Carts

With capacities up to 2,000 bushels and unload speeds up to 900+ bushels per minute, the 14 Series is the largest and fastest single auger grain cart on the market.

MODEL	BU	UNLOAD TIME	AUGER SIZE
1714-22S	1,640	1.8 min	22"
2014-22S	1,950	2.2 min	22"

* Bushel capacity measured with #2 corn at 15% moisture content

** Time varies with RPM and moisture content of grain

OPTIONAL VALVE BANK FEATURES

Slide to Fold

Quickly fold or unfold the auger by sliding a button.

Automatic Spout Positioning

The spout automatically returns to a factory set storage position to reduce transport width and automatically defaults to the operator's preferred unload position when unfolding.

Auto Gate

Automatically stop unload at preset weight.



REARVIEW CAMERA



REDESIGNED ROLL TARP

4-WAY SIDE-SHOOTER SPOUT

The new four-way spout design moves left and right as well as up and down to ensure precise grain placement.





DUAL AUGER GRAIN CARTS

STANDARD FEATURES

- X-tended reach folding auger
- Side-shooter spout
- Heavy-duty components
- Side-mounted ladder
- Scale with iFarm system
- Roll tarp

OPTIONS

- Right-side unload auger
- Swivel ball hitch
- Large flotation tires or tracks



32 SERIES

X-Tended Reach Dual Auger Grain Carts

This high-capacity cart combines all the advantages of a front-folding, single auger design with the low profile of a dual auger grain cart.

NEW



IN-LINE TANDEM AXLE CART with Hydraulic Suspension

Available on J&M's 1732, 2032, and 2332 models, the new inline tandem axle option offers increased stability, superior roadability, and bi-directional steering for complete maneuverability.

MODEL	BU	UNLOAD TIME	AUGER SIZE
1432-22S	1,450	2.0 min	22"
2032-22	1,970	2.0 min	22"
2332-22	2,260	2.2 min	22"

* Bushel capacity measured with #2 corn at 15% moisture content

** Time varies with RPM and moisture content of grain



FIRE SUPPRESSION



SCOTTY FIREFIGHTER FOAM DELIVERY SYSTEM

Keep your yardsite or worksite safe from fire

8 GPM FOAM APPLICATOR KIT

Ideal for situations where there is limited access to water.

- ¾" garden hose (GHT)
- 40 PSI water pressure required

15 GPM FOAM APPLICATOR KIT

Designed as an end-of-the-line hose attachment, provides fast and easy delivery of Class A or Class B (AFFF) foams.

- 1 ½" hose lines (NHT/NPSH)
- Standard fixed reduction rates of 1%



6 GAL BRAVO BACKPACK

A portable, comfortable, and easy to use solution for mopping up wildfires.



FOAM-FAST CARTRIDGE SYSTEM

A simple and effective method of deploying Foam-Fast wetting agent onto a fire scene.

- 8 GPM system fits ¾" garden hose (GHT)
- 15 GPM system fits 1 ½" NHT or NPSH threaded hose lines
- Includes a set of three 12" cartridges

Foam Fights Fires Fast!

Scotty Foam Applicator Kits and Foam Fast Cartridges easily attach to your hose for quick mixing. When used correctly, **foam applications can make water up to 10 times more efficient.**

BE WILDLAND FIRE PUMPS



HIGH PRESSURE 1.5" FIRE PUMP

A portable, affordable line of defense against wildfires

- Honda GX200
- 85 GPM @ 110 PSI
- 26' suction lift
- 1.5" inlet
- One 1.5" outlet / two 1" outlet

HIGH PRESSURE 2" FIRE PUMP WITH CART

Firefighting power meets mobility

- Honda GX200
- 126 GPM @ 85 PSI
- 26' suction lift
- 50' of 1.5" fire hose
- 12' suction hose
- 1.5" fire fog nozzle



HIGH PRESSURE 2" FIRE PUMP KIT

This complete firefighting kit includes all of the accessories needed to fight fire effectively.



FLAMAN QUICK RESPONSE FIRE SUPPRESSION SKIDS



150-GAL FIRE SUPPRESSION SKID

**Ideal for campgrounds, resort villages,
farms, and remote communities.**

The in-house designed and built QR150 fire skid puts an arsenal of quick-response safety equipment within easy reach.

STANDARD FEATURES

- 150 imperial gallon tank
- 2" Honda GX200 pump
- 100' $\frac{3}{4}$ " hose on an industrial cox reel
- Scotty fire nozzle with foam cartridge
- 48" heavy-duty powder-coated steel skid



150-GAL HYDRAULIC FIRE SUPPRESSION SKID

Works with your tractor hydraulics

Featuring a 150 gallon water tank, 100' of $\frac{3}{4}$ " hose on an industrial cox reel, and mounted on a 48" heavy-duty steel skid, the QR150H utilizes an open/close system hydraulic pump powered by your tractor's hydraulic lines.



Easily move the 48" wide skid to your half-ton truck or grain cart with the built-in fork pockets.

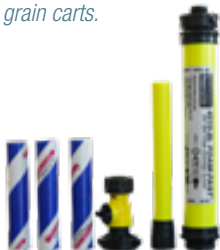




Due to tank dimensions, the QR225HP model is not recommended or warranted for use on grain carts.

SCOTTY FIREFIGHTER Foam Cartridge System

Comes with an easy-to-use cartridge-based foam delivery system, making water up to 10 times more efficient.



225-GAL HIGH PRESSURE FIRE SUPPRESSION SKID

Put more firefighting power in your truck box

Mounted on the same compact skid as the QR150 model, the new 225-gallon fire skid is designed for extra volume and features a high-pressure Wildland pump for increased firefighting effectiveness.

STANDARD FEATURES

- 225 imperial gallon tank
- 85 GPM/110 PSI Wildland pump with Honda GX200
- 100' ¾" hose on an industrial cox reel
- 1 ½" forestry coupler
- Scotty fire nozzle with (3) foam cartridges
- 48" heavy-duty steel skid with fork pockets



300-GAL FIRE SUPPRESSION SKID

Firefighter inspired. Flaman built.

Our high-capacity QR300 is designed for rural and remote communities looking to stop wildfires before they get out of control.

STANDARD FEATURES

- 300 imperial gallon tank
- Wildland high pressure pump with Honda GX200
- 100' 1" hose on an industrial cox reel
- 1 ½" forestry coupler
- 56" heavy-duty steel skid with fork pockets
- Optional Scotty fire nozzle with foam cartridge



ADD-ON

Safety Cage & Toolbox

- Side bracket hook holes for hard tools
- Front-mounted vertical storage for shovels, rakes, and other long-handled tools
- Top-mounted storage for fire hose, nozzles, and adapters
- Hose box with lid



ADD-ON

Utility Trailer Package

- 5' x 10' trailer with 12" solid sides
- 6,000 lb axle with electric brakes
- LED lights



CONVEY-ALL SEED TENDERS



WIRELESS REMOTE



SIDE MOUNTED CONVEYOR

CONVEY-ALL CST-850 Capacity of 680 bushels

- Full stainless steel body and conveyor
- Self-contained gas drive engine
- Three compartments
- Front deck



NEW

CONVEY-ALL CST-1550 COMMERCIAL SEED TENDER

Take your seeding to the next level

The high-capacity Convey-All CST-1550 is designed to transport seed and fertilizer simultaneously without damage or cross-contamination and unloads at a rate of 2 tons per minute.

STANDARD FEATURES

- Capacity of 1,250 bushels
- Six compartments with roll tarp
- Stainless steel conveyor, slopes, and gate
- Self-contained hydraulics
- External ladders
- Tri-axle air ride trailer
- Wireless remote



TIER 4 KUBOTA
DIESEL ENGINE



OPTIONAL
SCALE KIT AVAILABLE



CONVEY-ALL SEED CARTS

CONVEY-ALL CSC-1545 COMMERCIAL SEED CART

High-volume seeding solution

Working with your existing conveyor, the Convey-All CSC-1545 side draw seed tender features a side-drop chute system with stainless steel slopes and gates for quick, effortless unloading.

STANDARD FEATURES

- Capacity of 1,250 bushels
- Six compartments with roll tarp
- Stainless steel slopes and gates
- Side drop chutes
- External ladder
- 2 sight glasses per compartment
- Tri-axle air ride trailer



Optional Stainless
Steel Chutes Available

SIDE DROP CHUTES



SIGHT GLASSES



OPTIONAL ELECTRIC
GATE CONTROLS



OPTIONAL
REMOTE CONTROL



SIX COMPARTMENTS WITH ROLL TARP



HAUL ALL AG TRAILERS

HAUL ALL 45' TRIDEM GRAIN TRAILER

Capacity of 1,480 bushels

Built for heavy-duty work on the farm.

STANDARD FEATURES

- 33° front and rear hopper slopes
- 16" x 23" gate with 24" clearance
- Air ride suspension
- 24.5 steel rims and tires
- Full coverage mudflaps
- Epoxy paint coating
- Aluminum ladders, catwalks, and inner steps
- Rock guard
- Sight glass windows
- LED light package

**36' TANDEM MODEL
ALSO AVAILABLE**



HAUL ALL 40' TRIDEM SIDE DRAW SEED TENDER

Capacity of 1,260 bushels

A versatile and economical solution for bringing seed and fertilizer to the field in the spring and hauling your harvest back to the bins in the fall.

FEATURES

- Four hoppers
- 12 view glasses
- Electric gate with remote
- Stainless steel gates and chute
- Manual roll tarp
- Steel rims and mudflaps
- Ladders
- Crank handles

OPTIONS

- Electric tarp kit
- Rock guard protection
- Air ride suspension
- Mud flap/fenders package
- Scale system
- Epoxy paint coating
- Aluminum rims
- Catwalk

45' FIVE HOPPER MODEL ALSO AVAILABLE



SIDE DRAW CHUTES



LED LIGHT PACKAGE



BRUNS GRAIN WAGONS

BRUNS GRAVITY WAGON

Quality Canadian-made gravity bins

Bruns grain wagons are made to high-quality standards and come with many features that make them versatile, durable, and easy to use.

STANDARD FEATURES

- 400, 600, and 800 bushel sizes
- 12 ton, 20 ton, or 24 ton running gear
- Double sight windows
- Small door for easy access
- Interior bin ladder
- Roll-up tarp
- Easy climb external ladder
- Solid welded insided and out
- Powder coated paint

OPTIONS

- Scale kit
- Double compartment with centre divider
- Spring balancer
- Colour and customization options available

**OPTIONAL TWO COMPARTMENT DIVIDER
AVAILABLE ON BOTH BRUNS MODELS**



DOUBLE SIGHT WINDOWS



OPTIONAL SCALE KIT



MICHEL'S ROLL-UP TARP



KELLO-BILT DISCS



NOTCHED DISC BLADES



OPTIONAL WAVY DISCS



MODEL 800 HD OFFSET DISC

A rugged breaking disc designed for reclaiming land and for use in the construction industry.

KELLO-BILT DISCS

Kello-Bilt. Flaman-Priced. Field Ready.

Durable, low-maintenance heavy breaking discs manufactured in Canada. Available cutting widths range from 10' to 20' (offset) and 23' to 38' (tandem).

STANDARD FEATURES

- 26" to 36" standard notched disc blades
- Low maintenance oil bath bearings
- Welded steel spacer spool
- High carbon steel gang shafts and end washers
- Bearing standards and wear plates
- One-piece welded gang bar
- Offset and tandem models available

OPTIONS

- Wavy discs blades
- Rear hitch and light kit

BENEFITS

- Ideal for plowing down heavy residues and breaking up the compaction layers in your field
- Heavy duty construction withstands acres of rough use



WISHEK HEAVY DISCS

WISHEK BREAKING DISCS

Heaviest weight-per-blade in the agricultural industry

These heavy-duty breaking discs work in almost all soil conditions and crop residue. Available cutting widths range from 10' to 18' (offset) and 22' to 38' (tandem).

STANDARD FEATURES

- 30" smooth blades
- Hydraulic leveler
- Spool and bearing scrapers
- Spring cushioned gangs
- Single-point depth control
- 11" blade spacing
- Truck tires
- Approximately 1,000 lbs/ft

OPTION

- Notched disc blades



STANDARD SMOOTH BLADES



OPTIONAL NOTCHED DISCS



Special Order

MODEL Y2000

From its massive frame to its 36" blades, the Y2000 disc is designed to withstand the tough conditions of the construction industry.



SPRING CUSHIONED GANGS



KINZE MACH TILL



LARGE FLOTATION TIRES



RUBBER ROLLERS WITH SCRAPERS



**DOUBLE V BLADES
NOTCHED FRONT, SMOOTH BACK**

KINZE HIGH SPEED DISC

Heavyweight Power. High Field Speed.

The Kinze Mach Till is a heavy-duty, low maintenance high-speed disc that prepares seed beds in the spring and incorporates residue in the fall.

STANDARD FEATURES

- 20' to 41' widths available
- 20" or 22" double-V disc blades
- Heavy duty rubber packers with Maxlite scrapers
- Large flotation tires
- Right and left hand gauge wheels

BENEFITS

- Operates at high speeds without creating compaction
- Covers up to 60 acres per hour for improved productivity
- Hydraulically controlled disc depth
- Nutrient cycling, improved water infiltration, and reduced erosion
- One tool for spring and fall
- Narrow machine width for safe and easy transport from field to field
- Low maintenance features provide many hours of maintenance-free operation



BRILLION RIPPERS

BRILLION RIPPER / ZONE COMMANDER

Available with 5 to 16 shanks

Built to handle the stresses of deep ripping in hard, compacted soil, Brillion in-line rippers effectively shatter hardpan, improve moisture retention, and enhance root development.

STANDARD FEATURES

- 22" pre-cut smooth coulter blades
- Straight leg or parabolic shanks
- 30" shank spacing
- Hydraulic or spring auto-reset
- Spring trip weight, 3,200 lbs
- Tow caddy for easy transport
- Heavy-duty steel frame
- LED warning lights

Parabolic shanks with hydraulic trip



Straight leg shanks with spring trip



SMOOTH COULTER BLADES



HEAVY-DUTY STEEL FRAME



DEEP RIPPING UP TO 20"



SCHULTE DISC HARROW



36' WORKING WIDTH



60' WORKING WIDTH



OPTIONAL VALMAR KIT

SCHULTE SOILSTAR DISC HARROW

Heavy-duty, all-inclusive field prep

Help manage increased straw residue, quicken soil warming, and increase water penetration. The Schulte DHX does it all with its double row of wavy coulters and five bar heavy harrow.

STANDARD FEATURES

- 36' or 60' widths available
- 3 or 5 sections
- Two rows of 18" wavy coulters
- Five bars of 5/8 x 26" heavy harrow tines
- Torflex mount on disc blades
- Hydraulic lock for wing tension links
- Single point depth control
- Steerable wing wheels
- Electric or manual down pressure kit
- Optional valmar kit available



Double row of wavy coulters



Five rows of heavy harrow tines



SCHULTE 7-BAR HARROW

SCHULTE SOILSTAR 7-BAR HEAVY HARROW

Unique 7-bar harrow design

Prep your soil bed for seeding or manage residue after harvest. The new Schulte SHX offers a combination of light and heavy tines to distribute material more evenly, break up straw, and move ground more aggressively.

STANDARD FEATURES

- 60' or 84' widths available
- Heavy-duty 12" x 12" tubular frame
- 5 or 7 harrow sections
- 3 front rows of 5/8 x 28" Max Life tines
- 4 back rows of 1/2 x 28" Max Life tines
- Hydraulic harrow pressure system
- Hydraulic lock for wing tension links
- Large flotation tires
- Optional electric in-cab control monitor



HIGH-WEAR MAX LIFE TINES



HYDRAULIC HARROW CONTROL CYLINDER



Three rows of 5/8 x 28" tines



Four rows of 1/2 x 28" tines



ELECTRIC CONTROL MONITOR



RITEWAY LAND ROLLERS

F-3 SERIES

3 Section Roller

32' to 52' widths
17,640 to 24,400 lbs
F3-NT narrow transport
model available (12')
Heavy roller option

F-5 SERIES

5 Section Roller

46' to 84' widths
23,000 to 40,320 lbs
Wing tire bar
Heavy roller option

F-7 SERIES

7 Section Roller

65' to 89' widths
32,500 to 41,190 lbs
Wing tire bar



LARGE 42" DRUMS



FORWARD UNFOLD

The forward unfolding system goes from transport mode to field mode in minutes.



SHORTER DRUM SECTIONS

The shorter drum sections float independently, ensuring you roll every inch of your land evenly.

RITEWAY LAND ROLLER

The heaviest land rollers on the market

Riteway land rollers apply uniform weight and consistent surface contact across your field, providing even germination, faster spraying, robust crops, and a trouble-free harvest.

STANDARD FEATURES

- 32' to 89' widths available
- Forward unfolding system
- Taper lock replaceable drum shaft
- Auto-fold hydraulic wing lock
- Heavy-duty frame
- Safety chains and light package
- 14' transport width

HEAVY ROLLER OPTION

Comes standard up to 62'

- 17.5 tire upgrade
- 5/8" drum thickness

RITEWAY HARROWS

RITEWAY HARROW

Clear the way for worry-free seeding

Spread and break up trash and residue, while raking and leveling the ground to provide optimal seeding conditions.

STANDARD FEATURES

- Hydraulically controlled tine angle
- High wear tines
- Auto-fold hydraulic pivot wheel
- Parallel linkage system (5 & 7-bar)
- Solid pull draft arm
- Adjustable hitch height
- Heavy-duty frame
- Safety chains and light package

OPTION

- Valmar applicators



7-BAR HARROW



5-BAR HEAVY HARROW



ROTARY HARROW

7200 SERIES

7-Bar Mid Harrow

58' to 82' widths
14' 9" transport width
1/2" x 24" tines with high wear tips

8200 SERIES

5-Bar Heavy Harrow

55' to 90' widths
14' 7" transport width
9/16" or 5/8" x 28" tines with high wear tips

8200-NT SERIES

Narrow Transport

40' to 73' widths
9' 2" transport width

RH 9200 SERIES

Rotary Harrow

22' to 75' widths
13' 8" transport width
3/4" x 18" interlocking, quick adjustment tines

DELTA CHAIN HARROW

Draw Bar, Folding Wing Models

An effective, inexpensive tool for terrain grooming and pasture management.

- 28' to 36' widths available
- 5/8 tines
- Hydraulic wing fold

NEW



Available in Alberta only



DEGELMAN BIOSPREADER



HEAVY DUTY CONSTRUCTION



VERTICAL BEATER SYSTEM



TANDEM WALKING BEAM AXLE

DEGELMAN BIOSPREADER

Bringing heavy-duty to the next level

Engineered for any size operation, the all-new BioSpreader was designed to address producer's biggest challenges: affordability, load capacity, maintenance, maneuverability, spread consistency, and uniformity.

STANDARD FEATURES

- 540 cu/ft or 670 cu/ft capacity
- 1000 PTO
- 86' or 93' loading height
- Tandem axles
- 150 to 200 HP required
- Side extensions
- LED light kit



Consistent and uniform spread



Low profile skid steer loading

Available in Alberta only

DOYLE FERTILIZER TENDERS

DOYLE FERTILIZER TENDER

6 ton or 8 ton models available

Heavy duty, durable fertilizer spreaders with capacities up to 266 cu/ft.

STANDARD FEATURES

- Detachable stainless steel hopper
- 2" x 6" HD mild steel trailer
- 8" wide x 1" stainless steel conveyor chain
- Twin 4 blade dish spinners
- SRT tarp with stainless end caps
- Manual hydraulic press wheel engagement
- LED lights with wiring harness
- Corrosion resistant

OPTIONS

- Hydraulic drive
- 540/1000 RPM PTO pump
- 1 axle surge brake system

Available in Alberta only



6 TON Fertilizer Tender

204 cu/ft hopper
34° side slope
14' 6" tandem 8,000 lb axle
50' spread width



8 TON Fertilizer Tender

266 cu/ft hopper
40° side slope
18' tandem 10,000 lb axle
60' spread width

FERTILIZER SPREADERS

Sovema Fertilizer Spreader

Sovema 3-point hitch fertilizer spreaders feature a steel hopper and quickly spread fertilizer, sand, and salt.

Capacity: 1,250 lbs

Available in Alberta only



**BRABER ATV
PULL MODEL
ALSO
AVAILABLE**



Braber Fertilizer Spreader

Braber 3-point hitch fertilizer and grass spreaders feature a heavy duty poly hopper and stainless steel insert.

Capacity: 1,160 lbs

Available in Saskatchewan & Manitoba only



SCHULTE ROTARY CUTTERS



XH-1500 SERIES 5

Industrial grade rotary cutter

STANDARD FEATURES

- 15' cutting width
- Heavy-duty drive system
- Tandem walking axles
- Deck protection rings
- Safety light kit
- Reinforced gearbox



5026 ROTARY CUTTER

Extra wide 26' 2" cutting width

- Designed to cut grass, light brush, and crop residue
- Contours uneven terrain with 10' maximum frame section widths
- Optional fixed knife shredding kit



FX-1800 & FX-1800C

Midsize rotary cutter

- 15' cutting width
- 6.5" blade overlap and high blade tip speeds
- 7 gauge stump jumper
- New FX-1800C DOT and contractor model



FLX-1510

Optional Flex Arm

Allows the operator to travel on the road while the rotary mower cuts the ditch slope, improving visibility and safety. Available on 10' and 15' cutters.



FX-318 & FX-320

Designed for farm and ranch cutting

- 18' or 20' cutting width
- Flex wing design contours to any terrain
- Mow crop residue, pastures, weeds, orchards, and roadsides



GX-130 & GX-150

An economical cutting solution

- 13' or 15' cutting width
- Flex wing rotary cutter
- Super suction blades provide maximum grass lift and cut



FX-209

Rigid deck mower

- 9' cutting width
- Rigid single domed deck construction
- Pull type or three point hitch configurations

ROTARY CUTTERS & MOWERS

IRONCRAFT ROTARY CUTTERS

**Handle weeds, grass,
and brush with ease.**



1200 SERIES Standard Duty

4' to 6' widths
15 to 65 HP
Shear pin PTO

1600 SERIES Heavy Duty

6' and 7' widths
45 to 100 HP
Slip clutch PTO

300 SERIES Medium Duty

5' and 6' widths
30 to 85 HP
Slip clutch PTO

1600 SERIES Dual Spindle

8' and 10' widths
3-point and pull type
options
60 to 100 HP



Available in Alberta only

SOVEMA FINISHING MOWERS

**Tough, versatile,
and built for years of
dependable service.**

EM-3 SERIES Finishing Mowers

60", 72", or 84" widths
540 PTO
15 HP to 40 HP



Available in Alberta only

BRABER EQUIPMENT ROUGH CUT & FINISHING MOWERS

ROUGH CUT MOWERS Standard Duty

48" to 72" widths
Shear pin PTO
50 HP gearbox rating



ROUGH CUT MOWERS Heavy Duty

72" to 84" widths
Slip clutch PTO
70 HP gearbox rating



FINISHING MOWERS Heavy Duty

48" to 96" widths
540 PTO
20 HP to 45 HP rating



Available in Saskatchewan & Manitoba only

SCHULTE ROCK REMOVAL



RW-1935 SPARTAN ROCK PICKER

A rock picker and windrower in one machine

- Up to 19' coverage
- 3.5 cubic yard bucket
- Picks 2" to 27" rocks up to 4.25" deep
- 8' 7" dumping height
- Heavy-duty spring-loaded batts and 1.5" spaced T-iron grate
- Tandem walking axles

Proven
**RENTAL
TOUGH**



RS-320 JUMBO ROCK PICKER

2x capacity of an average picker

- Large 3.2 cubic yard hopper
- Removes 2" to 28" surface rocks
- Durable grate eliminates jamming and lets soil sift through



TITAN 5000 ROCK PICKER

- 5 cubic yard bucket
- 6.5 foot tall dump height for larger piles and truck loading
- Super wide 7' grate with wide or narrow spacing options



HIGH RISE 8000 ROCK PICKER

- Durable grate eliminates jamming and lets soil sift through
- Build larger stone piles or dump directly into tandem truck



GIANT 2500 & 3500 ROCK PICKER

Features a 60" or 72" picking width

- Picks 2" to 27" rocks
- Large 2.5 or 3.5 cubic yard hopper
- Durable T-iron grate with 1½" spacing



SRW-1000 & 1400 ROCK WINDROWER

- Windrows 2" to 25" rocks into uniform rows
- 10' or 14' drum width
- Optional ditch gravel reclamation high speed sprocket



SMR-600 & 800 SKID STEER MULTI RAKE WINDROWER

- 6' and 8' sizes
- The perfect tool for your skid
- Optional boom attachment

SNOW BLOWERS



SCHULTE RDX-117 **117" 3-Point Hitch Snow Blower**

Features a hydraulic chute and deflector and a rotating drum to eject snow out the side or top chute



SCHULTE SBX **87" Skid Steer Snow Blower**

Includes mounting plate, harness, and hydraulic valve block



SCHULTE FM-350 **Mount your snowblower on the front!**

Moves PTO and 3PT from the back to the front for improved visibility and ergonomics



SCHULTE **SDX-102, SDX-117 & SDX-144** **3-Point Hitch Snow Blowers**

SDX-102 Model: 102" / 500 PTO

SDX-117 Model: 117" / 1000 PTO gear-driven

SDX-144 Model: 144" / 1000 PTO gear-driven

- Heavily reinforced bottom auger ensures snow and ice are fed into the fan with ease
- 300° rotating chute mitigates chute freeze up
- Double deflector design reduces snow blow back

BRABER EQUIPMENT **3-Point Hitch Snow Blowers**

- Sizes range from 60" to 88"
- Cat I, three-point hitch
- Heavy duty adjustable skid shoes
- Manual adjustable chute deflector
- Removable side extensions
- Removable telescoping hitch
- 24" impeller with 5" paddles
- Manual 340° chute

**OPTIONAL HYDRAULIC
CHUTE ROTATION ON
SOME MODELS**



*Available in Saskatchewan
& Manitoba only*

S.HOULE BOX SCRAPER

Level any surface from gravel roads to fields.



HLL Series Box Scraper

STANDARD FEATURES

- 8', 10', and 12' widths available
- 30" blade height
- 40 to 110 HP

OPTIONS

- Left or right hand tilt
- Scarifying teeth
- GPS mast
- Light kit



PULL SCRAPERS

LANDOLL / ICON

16' Rear Steer Grader

- Three-way hydraulic operation to raise/lower, tilt, and blade swing
- 45° blade swing / 15° tilt
- Fold down box ends on blade

IMPLEMAX

16' GZ-425 Pull Scraper

- 8-way blade adjustment
- Hydraulic tilt angle and lift

Brand availability may vary by province



IRONCRAFT EQUIPMENT

3100 SERIES

Standard Duty Box Blade

- 5' or 6' widths
- 4 or 5 shanks
- 15 to 45 HP



3200 SERIES

Heavy Duty Box Blade

- 7' width
- 6 shanks
- 30 to 70 HP



7400 SERIES

Heavy Duty Disc Harrow

- 20" blades
- 50 to 70 HP



Available in Alberta only

SOVEMA ROTOTILLERS

Designed for all types of terrain.

LASER SERIES

Side-Shift Tiller

40" to 56" widths

12 to 35 HP

RP SERIES

Fixed Tiller

64" to 80" widths

35 to 60 HP

RBS SERIES

Side-Shift Tiller

60" widths

30 to 45 HP

RE SERIES

Fixed Tiller

80" to 88" widths

55 to 85 HP

RB SERIES

Fixed Tiller

60" to 64" widths

30 to 40 HP

RTX SERIES

Fixed Tiller

100" to 140" widths

80 to 180 HP

FOR LANDSCAPING AND
INDUSTRIAL APPLICATIONS

RE SERIES

RP SERIES

LASER SERIES

Available in Alberta only

BRABER ROTOTILLERS

3-Point Hitch Rototillers

STANDARD FEATURES

- 47" to 79" widths available
- 540 PTO
- 6.5" tillage depth
- 20 to 50 HP
- Six C-shaped tines per flange
- Skid shoes for depth control



Available in Saskatchewan & Manitoba only

TERRA FORCE ROTOTILLERS

3-Point Hitch Rotary Tillers

STANDARD FEATURES

- 42" to 102" widths available
- Chain and gear driven models
- 72" and larger models have oil bath drive beating
- Slip clutch PTO

YJC SERIES

YJR SERIES



Available in Alberta only



AGI POST POUNDERS



RENEGADE & RENEGADE+ TRAILER MODEL

660 lbs hammer weight

Pounds posts up to 11' 11" tall
Renegade+ model pounds posts up to 13' 8" tall with 720 lbs of hammer pressure
Shown with optional pilot auger



OUTLAW & OUTLAW+ 3PT SIDE MAST

660 lbs hammer weight

Pounds posts up to 11' 11" tall
Outlaw+ model pounds posts up to 14.5' tall with 720 lbs of hammer pressure
Low centre of gravity & wide stance for added strength and stability



SHERIFF SKID STEER OR 3PT CENTRE MAST

660 lbs hammer weight

Pounds posts up to 11' 3" tall
Self-contained hydraulic system
Centre mast configuration improves centre of gravity and stability of the unit



OPTIONAL POST HUGGER

Helps align posts for added convenience and safety. Square and T-post huggers available.



OPTIONAL PILOT AUGER

Drills all soil conditions and most rock obstructions up to 40".

DELTA HARROWS

3-Point Flexible Chain Harrow

An easy-to-use, inexpensive, multi-use tool for resurfacing and leveling gravel roads, grooming large arenas, and rejuvenating pastureland.

- 10' to 14' models available with 5/8 tines

Available in Alberta only



BALE SPEARS

3-Point & Skid Steer Bale Spears



Brand and models vary by province

SOVEMA HAY RAKES

Save time and fuel with a Cropmaster Hay Rake

STANDARD FEATURES

- Available with 10, 12, and 14 wheels
- Zinc-plated raking wheels
- Reinforced frame for extra durability
- Speed up drying time
- Spring loaded to adapt to the contours of the field
- Ideal for uneven hay land

OPTIONAL TANDEM REAR WALKING WHEELS



BALE CARTS



Proven
**RENTAL
TOUGH**



RITEWAY BALE CART

Move up to 1,000 bales a day

- Pick bales from 48" to 72" in diameter
- Gently gather bales without damaging the wrapping
- Comes with steel twine guards to protect wheel bearings from bale twine

BRILLION SEEDERS



Pull type, skid steer, and 3-point hitch grass seeders

STANDARD FEATURES

- Ag Seeders, Landscape Seeders, and Till 'N Seed models available
- 6' to 12' cutting widths
- High capacity seed meters
- Large notched front roller
- Ensure precise metering and consistent depth of seed placement for proper germination



SURE STAND
GRASS SEEDER



TILL 'N SEED

PALLET FORKS

Bucket & Skid Steer Pallet Forks

Brand and models vary by province



LEVEL WIND WIRE SPOOLER

Uses existing tractor hydraulics

Receiver mounts to tractor drawbar or front end loader
Optional 3-point hitch mount available



BRABER WOOD CHIPPERS

3-Point Hitch Wood Chippers

STANDARD FEATURES

- 4" or 6" models available
- 540 PTO / 18 to 45 HP
- Multi-positional discharge angle
- Special hardened blades (1 fixed, 4 rotating)
- 360° chute rotation
- Gravity feed



15 HP GAS MODEL
ALSO AVAILABLE

Available in Saskatchewan & Manitoba only



BUFFER VALLEY PRODUCTS

Storage solutions for feed, fertilizer, and treated seed.



*Stacks
inside or
on top
of each
other*

40 BUSHEL PALLET BIN

Safely store leftover seed in an easy to move container.

- 40 bu / 48 cubic feet
- 1 metric ton weight rating
- 49' W x 49' L x 51' H
- 15° hopper bottom slope with centre discharge
- Snap-on friction-fit lid
- Eyelets for overhead lifting
- Weather and rodent resistant



40, 50 & 100 BUSHEL PALLET BINS

Versatile, portable storage of grain, feed, and fertilizer.

- 40 bu to 100 bu / 50 cubic feet to 120 cubic feet
- 1–2 metric ton weight rating
- Steep hopper slope for quick and easy unloading
- Tie down pockets
- Heavy duty steel stand
- UV resistant and rodent proof



100 & 150 BUSHEL HOPPER BINS

Stationary hopper bottom bins for livestock and grain producers.

- 100 bu / 120 cubic feet
12' tall on stand
- 150 bu / 180 cubic feet
16.5' tall on stand
- 55° hopper bottom slope
- Adjustable boot and slider
- Heavy duty bolted stand
- Weather and rodent resistant



U-DRAIN FLOOR DRAIN

NORSTAR U-DRAIN FLOOR DRAIN

Residential and commercial floor drainage system

Permanently cemented into your structure, U-Drain substitutes the traditional grate system with a pre-engineered slotted-trench design system with an easily accessible sump.

FEATURES

- Grate-free floor drainage
- Easy to install
- Built to last
- Low maintenance and easy to clean
- Versatile
- Cost-effective
- Options available to customize your ideal drainage solution

RESIDENTIAL

Applications include:

Home garages
Pools
Driveways
Walkways



COMMERCIAL

Applications include:

Farm shops
Heavy equipment shops
Parkades
Aircraft hangars
Equipment storage
Fire halls
Service centres
Manufacturing facilities



Ideal for farm, industrial, automotive, and more!



MAGNUM FUEL TRAILERS

TRIDEM GOOSENECK FUEL TRAILER

Transport Canada Approved

With 1,000 imperial gallons of fuel storage, the tridem fuel cannon can keep three combines and one grain cart tractor working.

STANDARD FEATURES

- 7,000 lb Torflex axles with electric brakes
- Gas fuel pump with electric start Honda engine
- Accurate meter
- Filter spring rewind reel
- 1 ¼" x 35' arctic hose
- Swivel and auto nozzle
- 150 gal DEF tank
- Electric DEF pump with hose and reel
- Tool storage cabinets
- 2 in 1 air compressor and generator



**1,000 IMP GAL
TRIDEM TRAILER**



**2 IN 1 GENERATOR &
AIR COMPRESSOR**



**500 OR 660 IMP GAL
TANDEM TRAILER**

TANDEM FUEL TRAILERS

Transport Canada Approved

With 500 or 660 imperial gallons of fuel storage, these tandem fuel trailers provide plenty of refueling capacity so you can spend more time in the field.

STANDARD FEATURES

- 500 or 660 imperial gallon fuel tank
- 7,000 lb Torflex axles with electric brakes
- Gas fuel pump with electric start Honda engine
- Accurate meter
- Filter spring rewind reel
- 1 ¼" x 35' arctic hose
- Swivel and auto nozzle
- Storage cabinets

OPTIONS

- 100 gal DEF kit
- Side compartment tool storage cabinet
- Air compressors or generators

Special Order in Alberta



FUEL LOCK

FUEL LOCK PERSONAL

Secure fuel storage for personal use.

- Single user PIN entry
- Connect to new and existing pumps
- Automatic tank locking system
- Compatible with 120/240V pumps
- Weatherproof enclosure
- Upgrade to Fuel Lock Business anytime

FUEL LOCK BUSINESS

Secure, view, and track your fuel.

All features of Fuel Lock Personal plus:

- Daily, weekly or monthly usage reports
- Manage multiple employees and equipment
- Track employee usage and frequency
- Get real-time notifications about fuel usage
- Small to large farms with bulk fuel tanks



**REAL-TIME ALERTS
& USAGE REPORTS**



**CONNECT TO NEW
& EXISTING PUMPS**



**MANAGE MULTIPLE
EMPLOYEES**



DIESEL & DEF TANKS

ENDURAPLAS TANKS

Comes ready-to-use with a pump, gun, and auto shut-off nozzle.

- Available in 25, 50, 75, and 100 US gallon
- Compact and narrow models available
- Flow rate of 10 GPM (diesel) and 8 GPM (DEF)
- DEF tanks are designed to safely handle and store corrosive diesel exhaust fluids



BRABER DIESEL TANK

Comes with pump, hose, and auto shut-off nozzle.

- 106 US gallon
- 40 LPM / 10.6 GPM
- 12V open flow
- 45.5" x 32" x 27"

PUMPS & ACCESSORIES

8 GPM to 35 GPM GPI Fuel Pumps and Fuel Pump Meters

Diesel fuel tank filter and vent caps also available at select locations





FUEL TANKS

MERIDIAN FUEL TANKS

**Made for temperature extremes
-40° to +80°**

Meridian's ULC approved double wall containment tanks prevent costly leak and provide environmentally safe storage.

- Sizes range from 2,300 L to 75,000 L
- Skidded and non skidded options
- Agriculture and commercial designs
- Heavy gauge steel construction
- Fully equipped pump packages (20 to 40 GPM)
- Bottom fill systems (larger tanks)

AG DUTY TANK 2,300 L **505 imp gal / Double Wall Cradle**

Skid, Fill Rite 701 pump, hose retractor, level site gauge, drip tube, leak detection gauge

AG DUTY TANK 4,595 L **1000 imp gal / 70/30 Split with Skid**

Skid, Fill Rite 311 pump L with meter, level site gauges, (2) standard hose retractors with 8' posts, (2) drip tube, leak detection gauge

AG DUTY TANK 4,600 L **1000 imp gal**

Skid, Fill Rite 311VL pump, standard hose retractor with 8' post, level site gauge, drip pot, leak detection gauge

HEAVY DUTY TANK 10,000 L **2200 imp gal**

Skid, Fill Rite 311 pump/meter package, standard hose retractor with 8' post, level site gauge, drip pot, leak detection gauge

WESTEEL FUEL TANKS

Transportable & Stationary Models

FLAT TOP ROAD-VAULT

Single Wall Slip Tanks

- Sizes range from 63 to 990 imp gal
- 99 imp gal and 150 imp gal farm diesel flat top tanks also available
- Mobile and convenient fuel storage



DOUBLE WALL CROSS-VAULT

Transport Canada/UN and ULC certified tank

- Sizes range from 950 L to 4,500 L
- Crossroads of a stationary tank and a slip tank



SINGLE WALL CRADLE TANK

ULC certified, safe, and secure storage for your fuel.

- Sizes range from 300 to 1,000 imp gallon
- Ground storage allows for faster transfer rates using fuel pumps
- Affordable and reliable fuel storage





DJI AGRAS T50

DJI AGRAS T50

Agricultural Spray Drone

Safe, quiet, and easy to operate, the DJI Agras T50 features a spray width of 32' and is a cost-effective alternative to ground spraying.

The T50 also offers the flexibility to switch to either an orchard spray package or a spreading system for seed and granular fertilizer application.

FEATURES

- Coaxial twin rotor with 4 arms
- Binocular vision and spherical radar system
- Terrain-follow up to 50°
- Multi-directional obstacle sensing
- Advanced stability control
- Ultra-fast charging (full charge in 9 minutes)

SPRAYING

40 kg payload
16 L/min flow rate
40 acres/hour

SPREADING

50 kg payload
108 kg/min flow rate
1,500 kg/hour

NEW DJI AGRAS T100

Agricultural Spray Drone

Features such as increased flight speed and capacity (up to 80 acres/hour coverage), built-in LiDAR, and a Dual-Battery Lift System make the DJI Agras T100 an incredibly powerful asset.



SPRAYING SYSTEM

- 100 L spraying payload
- 30 L/min flow rate
- Dual atomization centrifugal sprinklers
- 36% increase in battery capacity

SPREADING SYSTEM

- 100 kg spreading payload
- 400 kg/min ultra-high flow rate
- 10m spreading width
- 66% increase in operation efficiency

LIFT SYSTEM

- 80 kg with dual battery lift system
- Weight detection
- Automatic balance control and navigation



DJI AGRAS T25P

Spraying & Mapping Drone

Featuring a compact, foldable design, the DJI T25P excels in aerial mapping and plant protection, offering flexible operation and convenient mobility, making it ideal for solo operations.

FEATURES

- Tri-vision system
- Millimeter-wave radar, intelligent obstacle bypassing
- Terrain following without aerial mapping



SPRAYING

20 L payload
16 L/min flow rate
5 m spray width

SPREADING

25 kg payload
190 kg/min flow rate
8 m spreading width



DJI MAVIC 3M

DJI MAVIC 3M

Multispectral Aerial Surveying Drone

Map and monitor the health of your crop. The DJI Mavic 3M features a highly integrated imaging system that scans and records information on your crop and the ground it occupies in minute detail and real time.

FEATURES

- 20-megapixel 4/3 CMOS RGB camera
- Four 5-megapixel multispectral cameras
- Sunlight sensor
- Multi-directional obstacle sensing
- Terrain-follow capability
- 15km ultra-long transmission range
- Up to 43 minutes of flight time
- Covers up to 200 hectares per flight
- Compact and portable

We offer Advanced Drone License Classes, Flight Review, and Sprayer Drone Operator Training.



Scan to learn more or book a demo.



DJI MATRICE 4T

Multi-Sensor Thermal Drone

Equipped with enhanced sensing capabilities and advanced features such as smart detection and measurement with laser range finder, the Matrice 4T is ideal for cattle/livestock operations.

FEATURES

- Laser range finder
- High-resolution thermal imaging
- Up to 112x hybrid zoom
- Intelligent recognition with AI



TRAILTECH DRONE TRAILER TD210 8'6" x 24'

Our new 24' Trailtech drone sprayer trailer features a 30' upper deck and comes equipped with a 950-gal water tank, two generators, a chem handler, and more. Customization options available.

TRAILER FEATURES

- (2) 10,000 lb axles
- Electric brakes
- Pintle hitch
- Heavy-duty suspension



Ask about generators, chem handlers, and other optional add-ons.

Low Salt Starter Fertilizers

High performance low salt starters

TopKrop's low salt starters are formulated to provide an efficient source of N-P-K-S. Early in the growing season, cool soil temperatures often limit the ability of plant roots to absorb sufficient nutrients and water.

A low salt starter with high availability of nutrients at the time of planting helps overcome this problem, leading to quicker plant emergence, better plant growth, and a higher yield potential.

Our starters are designed to be placed safely in furrow with your seed and deliver a low salt and highly efficient nutrient package.

INCITAVUS NXT & MAXX

- High efficiency phosphate starters with the added benefits of nitrogen, potassium, and sulphur
- 17 amino acids with a high-grade humic binder to help chelate nutrients and minerals in the soil
- 100% water soluble and seed safe
- Produced locally in Saskatchewan
- Additional Cu, Fe, Mn, Zn, and B micro-nutrients can be added (Incitavus Maxx)



TK622

- Guaranteed analysis of 6-22-2-1
- 100% water soluble and seed safe
- Manufactured in Saskatchewan

LS624

- Guaranteed analysis of 6-24-6
- 100% water soluble and seed safe



We offer a selection of liquid application systems from SurePoint Ag:

- Dual Metering Tube
- LiquiShift
- Sentinel Row Control



"We really like using TopKrop. With their products we can really push our crops ahead."

Ken Farion – Vegreville, AB

June 30: Lentils were drifted with Roundup, crop was almost yellow. Customer applied one pass Enzattera Maxx at 500 ml/acre.

July 7: Seven days after application, plants are starting to show signs of recovery.

July 15: Plants are still damaged but recovering well.

Biostimulants

Boost microbial activity in your soil

Biostimulants increase root development, organic matter, and water holding capacity.

Along with higher yields and ROI, biostimulants also help with overall plant health and soil quality.

SURGO MAXX

Surgo Maxx is an amino acid, high-grade humic, and kelp based seed treatment. It is blended with NPK and seven micronutrients, and topped off with specific plant growth regulators for on-seed application.

- Designed to increase fibrous rooting, nutrient efficiency, and root development
- Assists in germination and overall plant health
- Can be added to an existing seed treatment program or used as a standalone

ENZATERRA MAXX

A complex mix of macro and micro nutrients, plant growth regulators, biostimulants, and slow release (SRN) technology.

- Designed to increase chlorophyll transfer, promote flowering, and increase seed size, weight, and vigor
- Can be applied to any plant and sprayed with most fertilizers, pesticides, and fungicides
- Apply at herbicide and fungicide timing



JUNE 30, 2025



JULY 7, 2025



JULY 15, 2025



13 day old wheat treated with Surgo Maxx and seeded with Incitavus Maxx – already showing less heat/wind damage, taller, wider and healthier leaves, and deeper rooting when compared to a leading biological treatment.

PHYCOTERRA

A selection of soil, seed, and foliar products that use microalgae to feed the beneficial microbes in your soil.

- Benefits include improved soil structure, soil function, and microbial activity with proven on-farm results
- Easy-to-use and compatible with liquid fertilizers, herbicides, and other inputs





Foliar Nutrition

Stage your fertilizer applications in response to weather conditions and crop performance

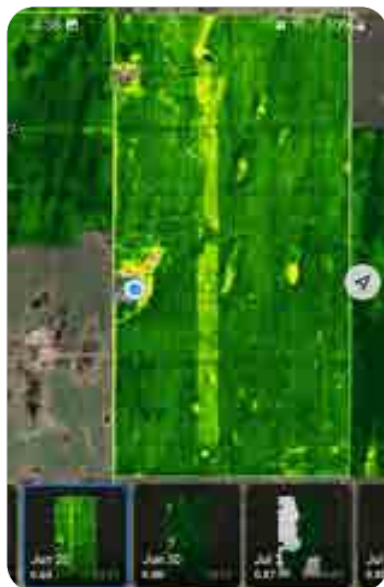
As your crop grows, its need for nutrients fluctuates. Split applications allow you to **help your plants at critical points in the growth cycle to ensure optimal results**—and help your plants reach their genetic potential.

Foliar feeding maintains a better overall nutrient balance, which may not be achieved through soil uptake alone.

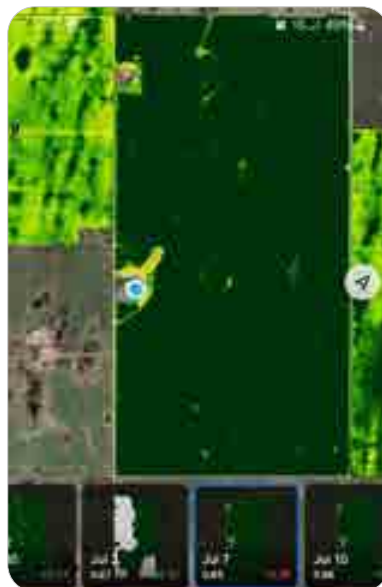
At TopKrop, our foliar fertilizers are tailored to different crops, functions, and nutrient deficiencies in the field.

These products provide a balance of quick and slow release nitrogen for continuous feeding, and are **low salt, non-corrosive, and herbicide compatible**.

As a result of an application error with his starter fertilizer (missed strip pictured below), this customer applied 2x KQ-XRN at 1.5 gal/acre. After combining and yield mapping, there was no visible difference between the spring-applied and summer-applied nitrogen fertilizer.



JUNE 30, 2025



JULY 7, 2025



JULY 15, 2025

FOLIAR FERTILIZERS

with Slow Release Nitrogen Technology

Our foliar fertilizers provide an alternative nitrogen source while delivering additional plant nutrients throughout the growing season.

This low salt, UV-activated formula is crop safe, non-burning, and will stick to the leaf and feed the plant for up to 30 days using slow release nitrogen technology.

These products are applied as a foliar and mix readily with liquid fertilizers and most herbicides.

TK1985

- 19-0-8-5s
- 19% nitrogen (72% slow release)
- 8% potassium and 5% sulphur
- Rate: 1.5 gal (5.7 L) / acre

28-0-0

- 28% nitrogen (72% slow release)
- Rate: Up to 2 gal (7.5 L) / acre



FOLIAR PLANT HEALTH

Mitigate disease pressure while delivering additional plant nutrients

TopKrop's foliar plant health products combine the advantage of slow release nitrogen with chloride, acting as a plant health promoter that has been known to be effective in disease suppression.

These foliar products are great for a late season phos and nitrogen top-up while aiding in plant health and increasing yields.

TK1458C

- 10-4-5-8c
- 10% nitrogen (72% slow release)
- 4% phosphate, 5% potassium, 8% chloride
- Rate: 1.5 gal (5.7 L) / acre

KS 1348C

- 10-3-4-8c
- 10% nitrogen (72% slow release)
- 3% phosphate, 4% potassium, 8% chloride
- Rate: 1.5 gal (5.7 L) / acre

How does foliar nutrition work?

- Increases chlorophyll concentration
- Increases photosynthesis rate
- Increases water and soil nutrient uptake
- Increases biomass

When should you stage your fertilizer applications?

- Mitigate nitrogen burn potential if growing conditions are less than optimal
- If conditions are very dry at seeding
- If conditions are too wet at seeding and the crop was mudded in or seed had to be surface applied
- If the crop is showing signs of nitrogen deficiency, which is usually pale lower leaves, yellowing, or purpling
- If your seeding tool can't accommodate your fertilizer needs you can reduce or eliminate some, knowing that you can make it up after the crop emerges



TK1985 vs Untreated



"I can wait until it rains, and I know I have the moisture to boost the yield potential, and then apply it."

Jason Basset of Bruno, SK on the benefits of TopKrop foliar products

Unleash the Power of Your Soil with Humic

Produce more with the land you have

It is more important than ever to increase crop production with the land you have, rather than trying to buy more acres.

This means it is vital to ensure that any non-producing acres are brought back into production and any under-performing acres are improved to maximize their output.

By investing in your soil now, you can ensure that your land will be healthy and productive well into the future.

Arabilis on the left



Field peas near Blucher, SK. Six days after seeding.

Arabilis on the left



Oats near Edmonton, AB. Both sides had 20L Incitavus Maxx in row, 500ml Enzaterra Maxx, and 6L TK1985 applied. Left side also had 2L Arabilis NXT applied in the fall.

Arabilis on the bottom



ARABILIS NXT

Amino and humic-based product

Arabilis NXT is an amino acid-based product with a high-grade humic binder designed to chelate nutrients and minerals in the soil.

The result of this is a breakdown of hardpan, alkali, and salinity areas, and greatly increased water holding and water infiltration capacity of the soil.

The amino acids help defend against stresses such as bacteria, insects, salt, extreme temperatures, and drought, while the metabolites aid with plant growth and development.

FEATURES

- 12% high-grade humic acid with essential amino acids
- Soluble over a pH range of 2.0 to 12.0
- Can be soil-applied or sprayed and mixed with most commercial fertilizers
- Hassle-free application

Humalite on the left



HUMALITE

Granular humic-based product

Humalite is a high-quality, certified organic soil amendment found only in Hanna, AB.

It is formed during the decomposition of organic materials and offers many agronomic benefits such as increased nutrient uptake, better water retention, and reduced input costs—leading to healthier plants and a higher yield potential.

FEATURES

- Minimum 64% humic acid
- Canadian-sourced and certified organic
- Made from pure, raw humalite
- Flexible application anytime of year
- Ideal for broadcast or in-furrow applications
- Spreader, floater, and air compatible

What factors contribute to under-performing land?

- Carbon and organic matter deficiency
- Salinity and/or alkali conditions
- Drought
- Compaction and hardpan

How can humic help?

- High water retention for effective drought mitigation
- Optimized nutrient uptake
- Increased nitrogen retention in the soil
- Reduced compaction, hardpan, alkali, and salinity conditions
- Accelerated crop residue breakdown
- Enhanced microbial activity in the soil
- Regulated pH levels
- Improved soil structure and increased carbon levels



"This land has been in our family for years. Instead of trying to expand our farm, we're going to try to make the farmland that we have better."

Reid Daley of Radville, SK shares why he uses TopKrop humic products



Behnke 53' semi sprayer trailers are available in spring or air ride suspensions. These sprayer trailers are engineered to handle the load of today's largest sprayers plus haul tanks on the upper deck.

BEHNKE

Behnke 53' Tri-Axle Sprayer Trailer

Load up Your Tanks and Your Sprayer

- 13' 5th wheel – equipped with winch track and sliding winches
- (3) 25,000 lb air brake axles
- 255/70R22.5 Tires
- Air ride suspension with dump valve
- Multi use beavertail and ramps
- Flip up side running boards
- Removable front wheel chocks with under-slung storage hangers
- 13' upper deck
- Treated wood deck
- LED and strobe lights
- Water tank available



BEHNKE

9.5 x 53' Air Ramp Equipment Trailer

(3) 25,000 lb Air Brake/Air Ride Axles

- T1 – 100 KSI main frame
- (3) 25,000 lb axles
- 255 / 70R22.5 tires
- Air ride with dump valve and pressure gauge
- 12" centre 4" I-beam cross members
- Air operated front lift for lower to upper deck
- Rear ramps air actuated for easy loading
- Double break beavertail
- Apitong decking
- Flip out over width clearance lights

Brand selection may vary by province.

**BEHNKE****Flaman ST Series Ag Sprayer Trailers****Customer Inspired. Flaman Built.**

Custom-design in-house with safety, speed, and easy of use at the top of mind. Flaman's ST-9100 and ST-9200 ag sprayer trailers are built on 53' Behnke trailers and are loaded with features to increase efficiency and reduce downtime.

- Triple axle
- 80,000 lb GVWR
- 22.5 tires
- Air ride suspension
- Lightweight Apitong hardwood decking
- Crossmembers on 12" centres
- Dual 2 speed jacks
- Deck space for extra storage
- Fertilizer grade water tanks
- 4500 USG rear and 3200 USG front tank
- Chemical handler with pump
- Chembine Hot-Tank (ST-9200)
- Steel sprayer fill boom
- Tote rack and cage
- Stowable stairs and grating tread
- Customization options available

**BEHNKE****Flaman ST-9400****Sprayer Transport Trailer**

- 5th wheel sprayer trailer
- Chemical handler with pump
- 3200 USG front tank
- Deck level sprayer fill
- Tote rack and cage

**TRAILTECH****Combine Trailer****The Professional Choice for Combine Trailers**

- Heavy duty flip up sides extend to 13'
- 12" x I-Beam
- Tandem or triple axle option
- 20,000 lb axles with air brakes
- Torque tube 5th wheel

**BEHNKE****Pintle Equipment Trailer****Big trailers for big jobs!**

- 9.5' wide by 31' long deck
- 6' rear air ramps
- (3) 25,000 lb air brake axles
- 235/75R17.5 tires
- Low arc spring suspension
- Air bag tilt with air lock on the tilt deck
- T-1 main frame
- Oak decking
- 2 speed landing gear

SPECIAL ORDER**Trailtech Header Transports****Easily transport and store your header**

Brand selection may vary by province.

FLAT DECK TRAILERS



Construction / Commercial Series



CEL270 18' & 20'

- 6" channel main frame
- (2) 7,000 lb spring axles
- Protected LED lights and wiring
- Teardrop fenders / slide in ramps
- 8,000 lb drop foot jack

H370GN

- 24' deck with beavertail on flip up centre
- 5' beavertail with full width tech ramps
- (3) 7,000 lb rubber ride axles
- Electric braking
- Curb weight: 6,575 lb



Premier Series



L270 DT – 20'

- 18' deck + 2' dovetail
- (2) 7,000 lb torsion axles
- Adjustable ball coupler/pintle
- Curb weight: 3,026 lb

L270T – 20'

- 16' tilt + 4' stationary
- (2) 7,000 lb torsion axles
- Electric braking
- Curb weight: 3,173 lb



Industrial Series – Market's Strongest Frame



TD210 – 26'

- 26' deck + 5' beavertail
- (2) 10,000 lb axles
- 5990 lb curb weight

MODEL SHOWN WITH
OPTIONAL ALUMINUM RIMS

Hydraulic Trailers



DIAMOND C HYDRAULIC TAIL

Never manually lower ramps again

- 12' powertail with auto lock
- Axle configurations: (2) 10,000 lb, (3) 10,000 lb, (2) 12,000 lb or (2) 15,000 lb
- Available lengths: 30', 32', 35', 38', 40'
- Remote control



DIAMOND C 22' TILT DET207

Versatile deck-over tilt

- Gooseneck or pintle
- (2) 7,000 lb Axles
- 20' deck / 2' dovetail
- Torflex suspension
- Hydraulic and power tilt



TRAILTECH MD270

Multi-deck get 4 trailers in 1!

- Gooseneck or pintle
- (2) 7,000 lb axles
- 20' deck / 2' dovetail
- Torflex suspension
- Hydraulic and power tilt



DIAMOND C

TANDEM DUAL GOOSENECK

Engineered One Piece I-Beam Frame

- Lengths from 20' to 53'
- Axle capacities from (2) 7,000 lb to (3) 12,000 lb
- 5' dove with spring-assisted, full width max ramps, floating ramp hinges make for a smooth transition from ramp to dove



DIAMOND C

TILT TRAILER 307HDT

Manufactured I-Beam Frame

- Low profile design
- 16' cushion tilt with lockout
- A-frame tool box
- 12K jack
- (3) 7,000 lb torsion axles



DIAMOND C

LPX307

Extreme Duty Flat Deck

- I-Beam frame for low profile design
- (2) 7,000 lb or (3) 7,000 lb axle configurations
- A-frame tool box
- 12K jack



DIAMOND C

DEC TRAILER

Manufactured I-Beam Frame

- Low profile design
- 16' cushion tilt with lockout
- A-frame tool box
- 12K jack
- (3) 7,000 lb torsion axles



Slide in Ramps



SOUTHLAND

HBAT7

20' Highboy Equipment Trailer

- (2) 7,000 lb E-Z lube axles
- 6' aluminum ramps
- 7K drop leg jack
- Rub rail and stake pockets / LED lights
- More lengths available



SOUTHLAND

LBAT

16' Steel Car Hauler

- (2) 35,000 lb axles
- 16' deck and 82" deck width
- Heavy duty fenders
- 5" HSS tube main frame
- More lengths available



SOUTHLAND

ETGT12

24' Gooseneck Trailer

- (2) 10,000 lb axles
- 24' Deck and 102" deck width
- 6' Fold Over HD Ramps
- High Tensile Steel Continuous Weld Gooseneck
- More lengths available

DUMP TRAILERS



HDU DUMP TRAILERS

Basics Done Best

- 3 Stage telescopic hoist w/ high flow pump
- 8" X 10lb I-Beam frame
- 10 GA body and sides
- 20" Sides + 6" Raised front and Board Brackets
- Lippert 7K axles
- Demco EZ Latch coupler
- 72" Rear Slide-out
- Mesh Roll Tarp
- 14' and 16' lengths



MDT, LPT 14 & 16 Standard Features

- I-Beam main frame
- Front mount 3 stage telescopic hoist
- 3-way tailgate
- E-Z lube axles
- (2) 7,000 lb axles LPT models
- (2) 6,000 lb axles MDT models
- 24" high sides
- 10 gauge wall and slides with 4" stiffener
- HD fenders
- Roll tarp
- Full bead blast, zinc rich primer, and powder coat paint



Diamond C's I-Beam main frame is lighter and stronger than traditional mild beam.



HEAVY DUTY Dump Trailers

- 10 ton Champion hoist
- Tarp
- All tubing frame
- HD fenders
- Complete wiring harness
- Available in 12 to 14 tags
- 16' goosenecks



Trailtech Tuffguard comes in several options for dump trailers. Save your money and protect only what is needed with strategic coverage on the chassis, fenders, and the front of the box.

**NEW Line of Trailtech Trailers Available 2026.
Contact us to learn more.**

Brand selection may vary by province.



SOUTHLAND
SL714 – 16K
14' Dump Trailer

- (2) 8,000 lb axles
- 6" rectangular tube main frame
- 10 ton Champion scissor hoist
- Lockable aluminum toolbox with 10 amp 110V built in charger
- HD aluminum slide out ramps
- 3 way tailgate with locks on each door with spring loaded door tie backs
- 12,000 lb drop leg jack
- Adjustable ball coupler



SOUTHLAND
SL714 – 16K HD
14' Dump Trailer

- (2) 8,000 lb axles
- 6" rectangular tube main frame
- 10 ton Champion scissor hoist
- Lockable aluminum toolbox with 10 amp 110V built in charger
- Load range F rated tires
- 12K hydraulic front jack
- 7 gauge floor with 10 gauge sides
- 3 way tailgate with locks on each door with spring loaded door tie backs
- HD aluminum slide out ramps



High Side and Gooseneck models available.



SOUTHLAND
SL714 – 14K
14' Dump Trailer

- (2) 7,000 lb spring axles
- 6" rectangular tube main frame
- 9 ton Champion scissor hoist
- Lockable aluminum tool box with 4 amp 110V built in charger
- Galvanized formed loading slide in ramps



SOUTHLAND
SL610 – 10K
10' Southland Dump

- 6" rectangular tube construction
- Scissor hoist lift
- (2) 5,200 lb spring axles
- 12 gauge bed with 14 gauge sides
- Barn door style
- Galvanized formed slide in loading ramps



SOUTHLAND
SL510 – 5K
10' Southland Dump

- 6" rectangular tube construction
- Scissor hoist lift
- 5,200 lb spring axle
- 12 gauge bed with 14 gauge sides
- Barn door style
- Galvanized formed slide in loading ramps

ENCLOSED TRAILERS



ROYAL
CARGO

XR SERIES Cargo Trailers

A Trailer That Gets The Job Done

- HSS structural tubing – main frames
- HSS structural tubing uprights
- Rivet-less aluminum exterior
- Exterior bonded with “VHB” two sided tape
- Aluminum rims
- LED tail lights
- 24” checker plate front
- Torsion axles
- Various colours available

CARGO BOX	AXLE
6' x 14' XR Cargo	(2) 3,500 lb
7' x 14' XR Cargo	(2) 3,500 lb
7' x 14' XR Cargo Sport	(2) 3,500 lb
7' x 16' XR Cargo	(2) 3,500 lb
8' x 16' XR Cargo	(2) 6,000 lb
8' x 26' XR Cargo*	(2) 6,000 lb
Length includes 2' of V-nose for XR Series 4' V-nose with ramp door	



ROYAL
CARGO

LT SERIES Cargo Trailers

Great Economy-Priced Trailer

- HSS structural tubing – main frames
- 030 Rivet-less aluminum exterior
- 3/8” Plywood – interior walls
- 5/8” Plywood – floor
- Enclosed wiring
- Galvanized hardware
- Aluminum molding top / bottom
- Rubber mounted lighting
- 12” checker plate front
- Rivet-less smooth sides
- Aluminum fenders
- Drop spring axles
- Bias ply tires

CARGO BOX	AXLE
5' x 10' LT	(1) 2,900 lb
5' x 12' LT	(1) 2,900 lb
6' x 12' LT	(1) 2,900 lb
6' x 12' LT	(2) 3,500 lb
6' x 14' LT	(2) 3,500 lb
6' x 14' LT	(2) 3,500 lb
7' x 14' LT	(2) 3,500 lb
7' x 16' LT	(2) 3,500 lb
7' x 18' LT	(2) 3,500 lb
7.5' x 16' LT	(2) 3,500 lb
7.5' x 18' LT	(2) 3,500 lb
7.5' x 20' LT	(2) 3,500 lb
8' x 16' LT	(2) 3,500 lb
8' x 18' LT	(2) 3,500 lb
8' x 22' LT	(2) 5,200 lb
8' x 26' LT	(2) 5,200 lb

Brand selection may vary by province.



CROSS TRAILERS

7x14 Cargo Trailer

7' Interior Height for UTVs

- Rectangular tube construction main frame, wall posts, and roof bows
- 3/4" floor and 3/8" side walls
- RV sideman door
- Drop ramp with flip over extension
- Available in various lengths



CROSS TRAILERS

24' Auto Hauler

Heavy Duty Rear Ramp Door

- Rectangular tube construction main frame, wall posts, and roof bows
- (2) 5,200 lb Dexter axles
- Available in various lengths and heights

***Xpress Aluminum Trailers
are ideal for homeowners, as
well as landscapers or those
needing a light-weight option
without losing out on quality.***



Xpress Series Cargo

All Aluminum Frame and Rims

Features:

- 6' x 12' + V-nose
- Rear double door or ramp
- 16" wall studs
- 24" roof and floor studs
- Spring suspension
- LED lights
- Chrome trim package
- Interior lighting with switch
- Water resistant walls and flooring
- 24" checker plate front guard

Options:

- Additional height available
- Upper and lower cabinets
- Extra tie downs
- Recessed E-track
- Motorcycle packages
- Ladder racks
- Custom flooring available
- Finished interior packages



Xpress Flat Front Car Hauler

All Aluminum Frame and Rims

Features:

- 8'6" x 24'
- Ramp door and side door
- Exterior LED lights
- Torsion suspension
- Interior lighting with switch
- Water resistant walls and flooring
- 24" checker plate front guard



V-Nose Cargo Trailer

- 7' x 16' V-nose trailer
- Tandem 3,500 lb torsion axles
- Rubberized automotive style undercoating
- One piece aluminum roof
- Heavy duty ramp door
- Protected wiring
- Integrated frame
- POLYCOR siding available



V-Nose Premium Cargo Trailer

- 7' x 14' + 2' V-nose
- Tandem 3,500 lb torsion axles
- Integrated frame
- 83" interior height
- One piece aluminum roof
- Protected wiring
- 24" high aluminum checker plate rock guard
- POLYCOR siding available

HORSE & STOCK TRAILERS



NORBERTS

Gooseneck & Bumper Pull

- One-of-a-kind two piece door with "catch latch" for operator safety
- Textured rock guard protection
- Slide windows and roof ventilation
- Steel construction



TRAILTECH

Industrial Truck Decks

Truck decks for work or play

- Lighted headache rack
- Steel tubing headache rack
- Rear window protection
- Recessed gooseneck ball plate
- Treated wood deck
- Rubber-mounted and recessed LED lighting



HILLSBORO

Industrial Truck Decks

Aluminum, Steel & Hybrid

- 7', 8.5', 9' and 11' lengths available
- Rear window protection
- Headache Rack w/ Square Tube Louvers
- Sealed Wiring Harness
- 30K Gooseneck 2-5/16" Ball Plate with Flush-Mount Cover



CM

Industrial Truck Decks

Steel & Aluminum

- 84", 8'6", 9'4", 11'4" lengths available
- Utility options available
- Rear window protection
- LED lighting

Brand selection may vary by province.

SPECIALTY TRAILERS



8.5 x 24 Office Trailer

Do you need on site space for your crew?

- (2) 5,200 lb torsion axles
- 36" x 76" RV entry side door
- Plywood walls and drymax floor
- Seamless white vinyl roof
- Insulated floor package
- Insulated walls
- Interior dome lights
- 35,000 BTU furnace package
- Thermostat, CO2 detector, fire extinguisher
- 2' aluminum cabinet
- Stand-up closet with shelf and rod



Aluminum Car Hauler

Customizable options available including:

- Cabinets
- Aluminum rims
- 12 volt lighting
- Premium escape door



ATC

Aluminum Stackers

Available in 20' to 53' lengths

- Tag and gooseneck style hitches
- Tandem and tri-axle configurations
- With low profile tilting lift
- Premium escape door
- Full interior package



Call us for pricing and available options!



Don't see what you need?

We take custom factory orders.

Contact your nearest Flaman for more information.

SLED TRAILERS

ROYAL
CARGO

XR Series Sled Trailers



XR SERIES 3 Place Highboy Sled Trailer

- 8' wide standard highboy
- (2) 3,500 lb axles
- Aluminum interior and mez deck flooring
- 16' + 4' V-nose



XR SERIES 4 Place Highboy Sled Trailer

- 8' wide standard highboy
- (2) 6,000 lb axles
- Aluminum interior and mez deck flooring
- 22' + 4' V-nose

ROYAL
CARGO

LT Series Sled Trailers



LT SERIES 3 Place Lowboy Sled Trailer

- (2) 3,500 lb axles
- 16' straight wall + 4' V-nose
- Mez deck flooring
- 86" interior height
- Front and rear ramps



LT SERIES 4 Place Highboy Sled Trailer

- (2) 5,200 lb axles
- 22' straight wall + 4' V-nose
- Mez deck flooring
- 86" interior height
- Front and rear ramps

Brand selection may vary by province.

UTILITY TRAILERS



DIAMOND C PSA Utility Trailer

- 3,500 lb Super lube axle
- EZ bi-fold gate
- 2" 10,000 lb Demco EZ-Latch coupler
- 4" Engineered channel frame
- 2,000 lb Flip top wind jack
- Integrated upright tie downs
- 12' and 14' lengths available



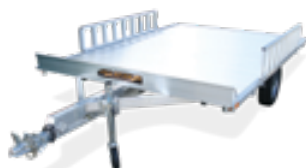
ALUMA 548 Utility

- 54" x 96"
- 2,200 lb torsion axle
- Aluminum frame and floor
- Aluminum fenders



ALUMA 7818 Utility

- 101.5" x 272"
- (2) 3,500 lb Rubber torsion axles
- Aluminum frame and floor
- Removable Aluminum fenders



ALUMA A8810 ATV

- Aluminum frame and floor
- Bed size: 88" x 126.75"
- 2,200 lb torsion axle
- Curb weight: 525 lb
- 13" Tires



ALUMA 6812H Utility

- 69" x 147"
- 3,500 lb Torsion axle
- Aluminum frame and floor
- Aluminum fenders



NORBERTS 10' UTB Utility Trailer

- 2,990 lb spring axle
- Galvanized steel
- Flip up ramp
- 5' and 6' widths available



ALUMA 8114 - 14' Utility

- Aluminum frame and floor
- Bed size: 81" x 145"
- Aluminum fenders with guard
- 3,000 lb rubber torsion axle



ALUMA WB20H Utility

- 96.75" x 239"
- 5,200 lb Torsion axle
- Aluminum frame and floor
- Aluminum fenders
- Slide in ramps



OASIS Utility Trailer

- 2,990 lb spring axle
- Swing-up jack
- 3" channel frame
- Slide-in ramps
- Fir plank decking
- Also available: 6' x 12' and 6' x 14'



ALUMA UTV - 12'

- 3,000 lb torsion axle
- Bed size: 71" x 150" & 57" ramp
- 24" aluminum shield with storage box

TILLAGE EQUIPMENT RENTALS



KINZE MACH TILL High Speed Discs

The Kinze Mach Till is ideal for trash management and seed bed preparation.



WISHEK DISCS 8' to 36' models available

The heaviest disc on the market and the most effective way to break up land or improve drainage.



BRILLION Ripper / Subsoiler

A rugged tillage implement that can handle the stresses of deep ripping in hard, compacted soil.



SCHULTE 36' DHX Disc Harrow

Handle all the tillage and residue management on your farm.



RITEWAY LAND ROLLERS Convenient narrow transport

Provides consistent surface contact for increased germination and smooths fields for straight cutting.



RITEWAY Heavy Harrows

Spread and break up trash and residue, while raking and leveling the ground.

GRAIN MOVING EQUIPMENT RENTALS



AGI VRX Grain Vac

Quiet, fast and easy to use.

- Gentle seed handling
- Move up to 6,000 BPH during full bin load-out
- Great for clean-up and full bin situations



PRO GRAIN Grain Extractor

The Pro Grain extractor delivers fast, dependable, and efficient grain transfer from your grain bags to your transport truck.

▶▶▶ Rental equipment may vary depending on dealer location.

EARTH MOVING EQUIPMENT RENTALS



12' Pull Blade



Landscraper

Ideal for landscaping, road building, and burying stones.



Box Scraper

HAY & LIVESTOCK EQUIPMENT RENTALS



RITEWAY BALE CARTS

Move up to 1,000 bales a day!

- Gentle on bales and the hayfield
- Quickly gather bales and place in semi-trailer sized groups



POST POUNDERS

Fencing made easier

- No tractor needed / easy operation
- Self-contained with a 13 HP Honda motor
- For building new fences or making repairs

▶▶▶ Rental equipment may vary depending on dealer location.



SOVEMA 12 OR 14 WHEEL HAY RAKE

Decrease drying time and increase productivity



JIFFY HAY FLOAT

Level your pasture and hay land



LEVEL-WIND Wire Roller



TPH BRILLION 10' Grass Seeder

The most accurate way to seed grass

LANDSCAPE EQUIPMENT RENTALS



SCHULTE ROUGH CUT MOWERS

Tough and dependable

- Great for mowing crop residue, pastures, weeds, or roadsides
- Ultra narrow transport width for added safety
- Designed to work in the toughest terrain



SCHULTE ROCK PICKERS

Build larger stone piles

- Pick rocks faster
- Good for spot picking in fields
- Tough and dependable

SCHULTE SRW1400 ROCK RAKE

Available only in the **Yorkton, Moosomin, and Swan River** regions

CONSTRUCTION RENTALS

4 models
available



SKID STEERS



MINI EXCAVATORS



SCISSOR LIFTS



TELEHANDLERS



COMPACTION

*Compaction headquarters.
Whatever your project
calls for, we have the
machine to do the job!*



HEATERS



CONCRETE TOOLS

We rent quality HILTI tools at Flaman for all your hammer drilling and jack hammering needs.

WE RENT:

Skid Steers	Auger Bits 6" – 30"	Snow Blades	Grapple Forks
Mini Excavators	Hyd Auger Drives	Snow Blowers	Pallet Forks
Scissor Lifts	Auger Extensions	Snow Buckets	Brooms
Telehandlers	Frost Bits	Sweepers	Buckets <i>Tooth & Smooth</i>
Heaters	Bale Spears	Tree Scoops	
Concrete Tools	Hyd Jack Hammers	Trenchers	

Yorkton, SK **306.994.0654** | Moosomin, SK **306.802.4808** | Swan River, MB **204.400.5621**

TRAILER RENTALS



14' DUMP SHOWN
10' – 14' SIZES AVAILABLE

Need to haul dirt, snow, or debris?

The two-way tailgate features a rear double door and spreader gate, allowing for fast, controlled loading. Rent one of our 10', 14', and 16' tandem axle dump trailers today.

DUMP TRAILERS

8' Hydraulic Dump Trailer
10' Tandem Dump Trailer
12' Tandem Dump Trailer
14' Hydraulic Dump Trailer
16' Gooseneck Hydraulic Dump Trailer



These trailers tilt for easy loading.

TILT DECK FLATDECK TRAILERS

6' x12' Utility Tilt Trailer
16' Tilt Trailer
18' Tilt Trailer
20' Tilt Trailer
20' Lowboy Tilt Trailer with Winch
20' H270 Highboy Tilt Trailer with Winch



24' GOOSENECK FLAT DECK SHOWN
20' – 30' SIZES AVAILABLE

Great for general farm, hotshot, or long haul trucking.

We have 20' to 30' trailers available with capacity up to 20,000 lb.

HIGHBOY FLAT DECK TRAILERS

18' H-260 Flat Deck Trailer
20' H-270 Flat Deck Trailer
20' H270 Tilt Trailer with Winch
20'+ 5' H-270 Flat Deck Trailer
25'+ 5' H-270 Flat Deck Trailer
26'+ 5' TD Pintle Flat Deck Trailer
30'+ 5' TD215 Pintle Flat Deck Trailer

GOOSENECK FLAT DECK TRAILERS

26'+ 5' TD 210 Gooseneck Highboy Trailer
30'+ 5' TD 210 Gooseneck Highboy Trailer
30'+ 5' TD 215 Gooseneck Highboy Trailer
36' Tri-Axle Gooseneck Highboy Trailer



18' LOWBOY SHOWN

LOWBOY FLAT DECK TRAILERS

16' Lowboy Flat Deck Trailer
18' Lowboy Flat Deck Trailer
20' Lowboy Flat Deck Trailer

JOIN OUR TEAM!

**Looking to expand
your business?**

Join our growing team of rental dealers in Western Canada. You can expect a supportive network of like-minded business people to help you grow your business and be successful. Last year we rented equipment to over **40,000 customers** in farming, oilfield, construction, and more. Investment in equipment is required. Proudly serving Western Canada since 1959.

Sizes vary upon location.

Call your local Flaman dealer for available sizes.



4' x 8' UTILITY SHOWN
4' x 8' – 5' x 8' SIZES AVAILABLE

Do you have leaves and branches to haul to the landfill?

Our utility trailers are perfect for the job.

UTILITY TRAILERS

2-Place Snowmobile Highboy
4' x 8' Utility Trailer with Sides
6' x 10' Utility with Sides
6' x 12' Tilt Deck



Haul your cattle or horses in one of our easy pulling stock trailers.

We have 15' to 24' trailers available.

HORSE & STOCK TRAILERS

10' 2-Horse Trailer
14' 2-Horse Trailer
15' 2-Horse Trailer
16' Stock Trailer
20' Stock Gooseneck Trailer
24' Stock Gooseneck Trailer



7' x 16' WITH V-NOSE
ENCLOSED SHOWN

Moving? Need some temporary, mobile storage?

Various sizes of cargo trailers available Ramp or barn door options

UTILITY TRAILERS

8' Enclosed Trailer
10' Enclosed Trailer
12' Enclosed Trailer
14' Enclosed Trailer
16' Enclosed Trailer
18' Enclosed Trailer
20' Enclosed Trailer
22' + 4' Enclosed Trailer
24' Enclosed Carhauler Trailer



Ground level loading makes loading and unloading a breeze.

AIRTOW TRAILER

AirTow 14' 10K Capacity

**BECOME A
FLAMAN
RENTAL DEALER**

Alberta – Call Ken
587.206.8359

Saskatchewan & Manitoba – Call Jerry
306.700.3823



Peace Country**DAWSON CREEK, BC**
250.219.2034

Agroworks Services

★ **FAIRVIEW**
780.900.4710

Flaman Store

FALHER
587.647.7368

Elite Ag Sales & Rentals

GRANDE PRAIRIE
1.800.390.6924

Keddie's Tack & Western Wear

HIGH PRAIRIE
780.523.1405

EC Bar Ranch

Central Alberta**ATHABASCA**
780.975.9500

McEwen's Fuels & Fertilizers

BARRHEAD
780.674.2146

McEwen's Fuels & Fertilizers

BON ACCORD / MORINVILLE
780.921.3002

McEwen's Fuels & Fertilizers

CARSTAIRS
403.337.0009

Koch Fuel Products Inc.

★ **EDMONTON**
587.206.8179

Flaman Store

EVANSBURG
780.727.2149

McEwen's Fuels & Fertilizers

FORT SASKATCHEWAN
780.998.2058

McEwen's Fuels & Fertilizers

LLOYDMINSTER
780.870.8900

Headon Rentals

★ **NISKU**
587.206.8359

Flaman Store

PONOKA
403.783.6866

Dark Side Rentals

ROSALIND
780.781.3301

Leading Ag Rentals

RYLEY
780.446.2684

Mike Bonham Ag Rentals

SMOKY LAKE
780.656.3881

McEwen's Fuels & Fertilizers

STETTLE
403.742.5300

Koch Fuel Products

STONY PLAIN
780.963.2078

McEwen's Fuels & Fertilizers

SUNDRE
403.638.4930

Koch Fuel Products Inc.

THORHILD
780.398.3944

McEwen's Fuels & Fertilizers

THREE HILLS
403.443.5770

Koch Fuel Products Inc.

VEGREVILLE
587.280.2474

Royal Park Rentals

WESTLOCK
780.349.3223

McEwen's Fuels & Fertilizers

Southern Alberta**ACADIA VALLEY**
403.664.5173

Neilson Mechanical Inc.

CARDSTON
403.653.4495

Ridge Ag Rentals

FOREMOST
403.867.2436

AgroPlus Holdings

FORT MACLEOD
403.915.3499

MoBoot Ag Mechanics & Rentals

★ **LETHBRIDGE**
587.800.7921

Flaman Store

★ **MEDICINE HAT**
587.206.8163

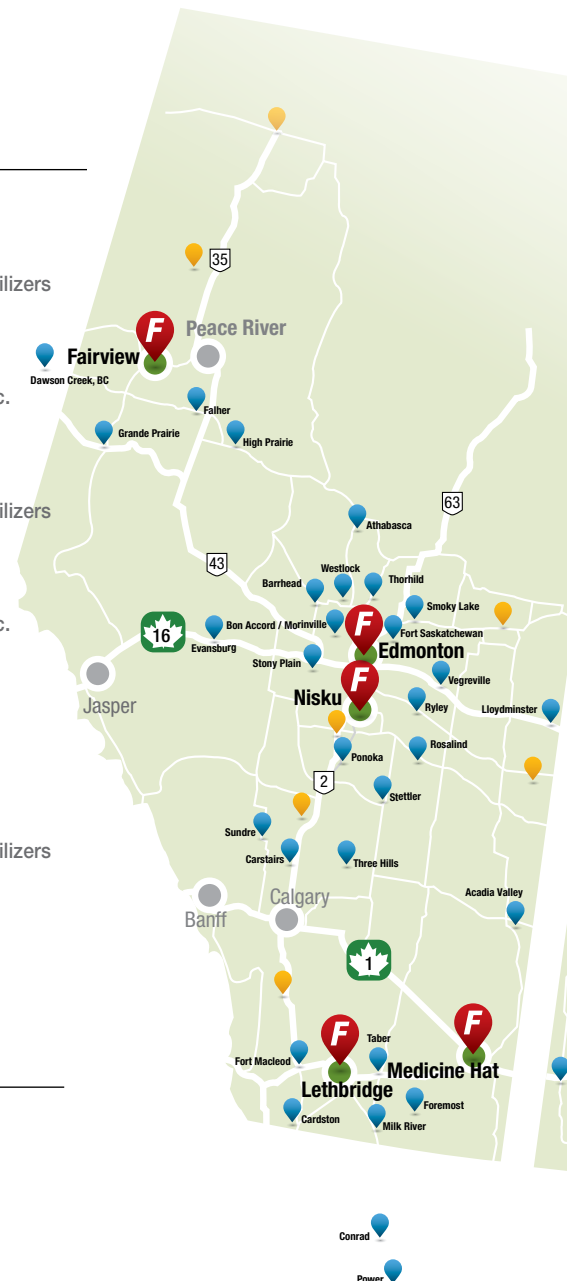
Flaman Store

MILK RIVER
403.647.3790

LJB Fuels Ltd.

TABER
403.315.3694

I-Beam Irrigation





Rental Dealer
Location



Flaman Store
Location



Rental Franchise
Opportunity

Saskatchewan

ASSINIBOIA

306.642.4621

B & A Petroleum

ESTEVAN

306.634.5016

South Sask Rentals Inc

★ MOOSOMIN

306.802.4808

Flaman Store

SHAUNAVON

306.297.1400

B & A Petroleum

UNITY

306.843.8275

Last Pass Ag Ltd

CANORA

306.563.6426

Brendonn Holdings

HOOSIER

306.460.9650

C. Fischer Trucking Inc

PANGMAN

306.442.7400

Redcoat Ag Inc.

★ SOUTHEY

306.993.9688

Flaman Store

WASECA

306.903.7227

Last Pass Ag Ltd

CUDWORTH

306.256.2300

Horizon Fertilizers

HUMBOLDT

306.682.2574

Horizon Fertilizer

★ PRINCE ALBERT

306.400.3361

Flaman Store

★ SWIFT CURRENT

844.966.0962

Flaman Store

WILKIE

306.843.8275

Last Pass Ag Ltd

ELROSE

306.378.7804

MacDonald Rentals

MAPLE CREEK

306.662.2262

B & A Petroleum

★ SASKATOON

306.700.3823

Flaman Store

SWIFT CURRENT RT

306.773.8890

B & A Petroleum

★ YORKTON

306.994.0654

Flaman Store



Manitoba

AUSTIN

204.637.2515

Mar-Dee Enterprises

NEEPAWA

204.476.2348

Mar-Dee Enterprises

BRANDON

204.728.4554

Mar-Dee Enterprises

PORTAGE LA PRAIRIE

204.857.8764

Mar-Dee Enterprises

CRYSTAL CITY

204.825.0170

Thiessen AgriVentures

RESTON

204.877.3729

Mar-Dee Enterprises

DAUPHIN

204.638.4401

Brendonn Holdings

RUSSELL

204.773.2268

Brendonn Holdings

MELITA

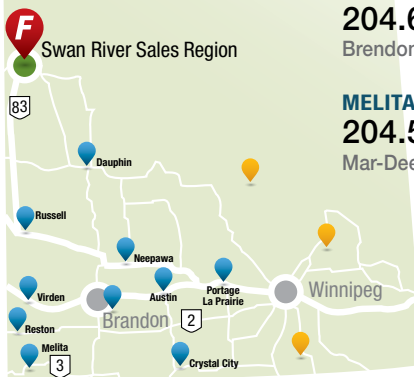
204.522.3202

Mar-Dee Enterprises

VIRDEN

204.748.2283

Mar-Dee Enterprises



★ SWAN RIVER SALES REGION
204.400.5621

Montana

CONRAD, MT

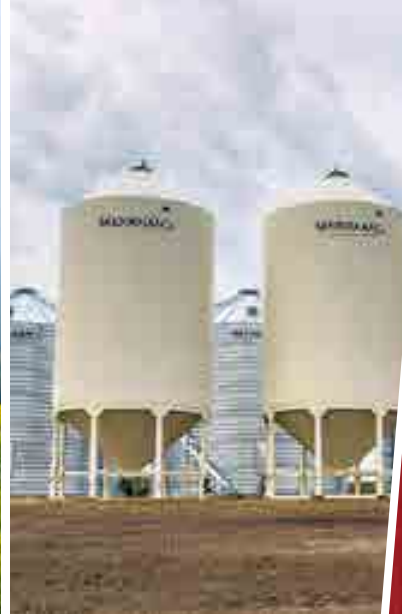
406.467.2901

Lattin & Sons

POWER, MT

406.467.2901

Lattin & Sons



ALBERTA

Edmonton N.

587.206.8179

8910 Yellowhead Trail

Medicine Hat

587.206.8163

3377 Gershaw Dr SW

Lethbridge

587.800.7921

16 Broxburn Boulevard

Edmonton S.

587.206.8359

2310 Sparrow Dr.
(Nisku)

Fairview

780.900.4710

10917 92nd Ave
(Peace Country)

SASKATCHEWAN

Prince Albert

306.400.3361

Hwy #2 South

Moosomin

306.802.4808

Hwy #1 West

Yorkton

306.994.0654

Hwy #16 East

Swift Current

844.966.0962

2500 South Service Rd W

Saskatoon

306.700.3823

Hwy #16 & 71st St

Southey

306.993.9688

Hwy #6

MANITOBA

Swan River Sales Region

204.400.5621

Hwy #83A

www.flaman.com